

XXXII Euro-African Championships 2019

Svendborg Denmark 5.-9.9



PARTICULAR RULES

Danish Divers' Federation has the pleasure of inviting your National Spearfishing Team, to the CMAS XXXII and first female Euro-African Championships in Spearfishing to be held in Svendborg in the beautiful coast of Denmark.

In order for us to be able to organize the event in time, we kindly ask you to return the final entry form (Annex 1) by May 1st 2019. No registration is accepted after this time.

All National Federations must register their National team to CMAS, and pay the CMAS fee. Hosting federation: Danish Divers' Federation

1. CHAMPIONSHIP INTERNATIONAL JURY AND SPORT AUTHORITY

The International Jury will be formed by the CMAS Technical Delegate: to be appointed by the CMAS Board of Directors.

The Director of Competition will be William Siefert with responsibility and functions as shown in CMAS General Rules for Spearfishing Championships CMAS, acting additionally as direct support and advisor of CMAS International Judge.

The Deputy Director of Competition will be Rasmus Brøndum appointed by Danish Spearfishing Committee, who will also act as a technical supporter of the International Judge.

The Security Coordinator will be Claus Sneiders

The Medical adviser will be Dr. Tom Helm Petersen

Technical chief/ IT Bo Sonne Andersen

2. TECHNICAL CONTROL

Technical control under the CMAS Technical Delegate, the Competition Director and the Coordinator

3. INSCRIPTION / REGISTRATION

Please register by email to the following addresses:

dsf@sportsdykning.dk (Danish Divers' Federation).

williamsiefert@sol.dk (Main secretary of local organizing committee).

spo@cmas.org (CMAS HQ).

After registering: your team will receive all the necessary information about the competition, including detailed competition rules, accommodation information and scouting opportunities.

The following table contains all the different inscription options.

Nr. Of member of national team	INSCRIPTION MODE 1			INSCRIPTION MODE 2					
	Inscription + Accommodation			Inscription Only					
	Value of total registration	1st payment up to 1/05/2019	2nd payment up to 15/07/2019	Value of total registration	1st payment up to 1/05/2019	2nd payment up to 15/07/2019			
1	600 €	300 €	300 €	300 €	150 €	150 €			
2	1200 €	600 €	600 €	600 €	300 €	300 €			
3	1800 €	900 €	900 €	900 €	450 €	450 €			
4	2400 €	1200 €	1200 €	1200 €	600 €	600 €			
5	3000€	1500 €	1500€	1500 €	750 €	750 €			
6	3600 €	1800 €	1800€	1800 €	900 €	900 €			

As outlined in the table above, there are two different inscription options including or excluding accommodation. The accommodation will be at Hotel Christiansminde and includes a team room for 3-4 persons, full catering, transportation to competition areas, lunch at Naturama and cocktails after the opening ceremony - from Thursday 5.9 - Monday 9.9

TEAMS WITH INSCRIPTION MODE 2 HAVE TO ORGANISE THEIR OWN LAND TRANSPORTATION FOR THE COMPETITION AREAS. INSCRIPTION MODE 2 INCLUDES ONLY THE GALA DINNER & COCKTAILS AT THE OPENING CEREMONY.

All payments shall be paid by bank transfer, clearly marked "EA Championships, Spearfishing 2019" country and names. Recipient of the payment: Danish Divers' Federation
Bank: Dansk Sportsdykker Forbund, Idrættenshus, Broendby stadion 20, 2605 Broendby
IBAN Account number: **DK0230000005533996**
BIC code: **DABADKKK**

Note: Each team must provide the name lists of all members in delegations that are going to enter competition zone areas at any point (Full name, passport number, date of birth, nationality, place of birth, occupation), latest 1. May 2019.

Additional days of accommodation / before the official date

- <https://www.danhostel-svendborg.dk/>
- <https://hotel-christiansminde.business.site/> Svendborg
- <https://www.dkhostel.dk/> Kerteminde
- <https://bootsverleih.dk/sommerhuse/> Langeland
- <https://www.airbnb.dk/>

Scouting Boat rental / before the official date

- <https://www.vmac.dk/> Nyborg
- <https://thf.dk/baadudlejning/> Langeland
- <https://bootsverleih.dk/baade/> Langeland

Each nation will get 3 official swimming buoy with blue-white Alpha flag, nationality and number on - both male and female teams. This is the only buoy that will be allowed to use during competition days. There will be no line, rope or other accessories given by the organisation, but it will be possible to buy from Scorpena shop at Hotel Christiansminde during the competition. If you will use a GPS it will be under water the most of time, so make sure it is 100% water-proof and put it in an extra back. Competitors can personalize "tune" the Official buoy as much as they want.

If you want to have a similar hunter for testing you can buy it from:

<http://scorpena.com/buj-lodka-scorpena-d2-light.html>



3. CMAS SPEARFISHING INTERNATIONAL RULES

The rules can be found on the CMAS web page, and on the official web page of the competition: <https://spearo.dk/>

POINT CALCULATIONS AND VALID CATCHES

Valid catches, minimum weights and categories are same for Women and Male EA championships 2019

The point of calculation (being 300 grams the minimum weight for some category of species)

- Scoring is done by attributing one (1) point per gram of each valid fish.
- All fish (category 1-5) gets 300 hit point each fish.
- There will be an extra bonus per different species = 300 points X species
- Bonus for completing quota of catches of species (5 fish) = 600 points X quota completed

- Only 5 fish of each category specie will be accepted. If a competitor brings more than 5 fish in one category specie, judge will weight 5 minus extra fishes. Example; if competitor brings 7 flounders. Judge will weight 5 minus 2 extra = only 3 category species.
- Penalty will be applied for fish weighing less than 2/3 of the specific minimum weight. Penalty points are equal to the minimum weight grams of the species.
- Only valid fish from category 1-5 listed below will be awarded any points

Point calculation and valid catches:

All fishes belonging to same group are weighted together. Maximum weight point is from one single fish 12500 points (12500 grams) 12,5 kg

Species list:

Category 1 = 800 gram 42 cm = 1 point pr gram + 300 hit point



Cod/Torsk = 800 gram 42 cm



Coalfish/Mørksej = 800 gram 42 cm



Pollack/Lubbe = 800 gram 42 cm



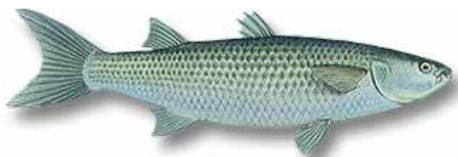
Seabass/havaborre = 800 gram 42 cm



Seatrout/Havørred = 800 gram 42 cm



Ling /Lange = 800 gram 42 cm



Mullet/Multe = 800 gram 42 cm



Catfish/Havkat = 800 gram 42 cm

Category 2 = 300 gram 30 cm = 1 point pr gram and 300 hit points



Makrel = 300 gram 30 cm



Perch/Aborre = 300 gram 30 cm

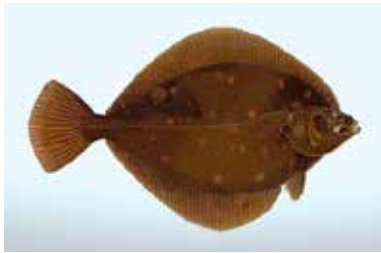


Heering/Sild = 300 gram 30 cm



Garfish/Hornfisk = 300 gram 42 cm

Category 3 = Flatfish = 300 gram 30 cm = 1 point pr gram and 300 hit points.



Plaice/Rødspætte = 300 gram 30 cm



Flounder /Skrubbe*= 300 gram 30 cm



Dab/Ising* = 300 gram 30 cm



Sole/Søtunge = 300 gram 30 cm

*These species can look the same, se more pictures at the end.

Dab (*Limanda limanda*): have large scales, the sideline is curved at the pectoral fin and smooth skinned when touched from head towards tail but rough when touched from tail towards head. The eyes are more upright.

Plaice (*Pleuronectes platessa*): Smooth and slippery all over the body, very clear red marks, the underside is transparent with zigzag pattern. Have pointy bone projections behind the eyes.

Flounder (*Platichthys flesus*): rough skin, sometimes not all over the body, can have red marks but not very defined, underside is white and non transparent.

Sole Very elongated, very strange mouth, very rare to catch

Category 4 = 500 gram 32 cm = 1 point pr gram and 300 hit points.



Turbut/Pighvar = 500 gram 32 cm



Brill/Slethvar = 500 gram 32 cm

Category 5 = 2500 gram 60 cm = 1 point pr gram and 300 hit points.

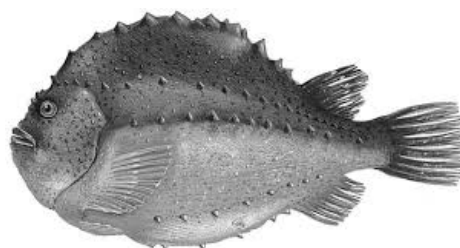


Salmon/ Laks = 2500 gram 60 cm

Fish not valid:



Eel/Ål (Illegal to catch) DSF from the competition



Lumpfish/Stenbider

Phase 2: qualification points (separate calculation for Women and Men)

The qualification points are calculated per day as:
(competitors points total / best competitors points total) x 100

4. PROTEST

A written protest **must be announced** to the jury of the competition within 15min after the competition day has ended, or after final results are announced. Protest fee is 100€ which will be returned in case of acceptance of the issue (see details in header 13.)

5. STAMMENT OF LIABILITY

Participation in the Euro-African Championships takes place at athletes' own responsibility. The hosting federation or organizer is not liable for any personal or material damage.

6. AKKOMMODATION

<https://hotel-christiansminde.business.site/> Svendborg

7. COMPETITION

There will be separate Zones for the two categories Women and Men.

The first competition day will be from the shore at Langeland Women and Men

Second day: Leaving point to Sprogø from Nyborg marina :

<https://www.google.com/maps/@55.303966,10.7867753,221m/data=!3m1!1e3>

All the areas utilization in Day 1 or Day 2 will be decided at the captain meeting Thursday evening 5.9 Sprogø zone will have two different starting points and goal areas. It is allowed to swim from one starting point and arrive in other goal area. Langeland zone will be two different starting points and goal areas BUT IT IS NOT ALLOWED to swim from one starting point and arrive in other goal area.

All the Captains have to inform the CMAS organisation for the competitors starting points for the Day 1 & Day 2. This have to be done by written in the paper at the 5.9 thursday evening captains meeting. All the competitors starting points will be published after the captains meeting Thursday evening 5.9 After this is not possible to do any changes in the starting points.

If the team change the competitor (sickness) before the competition. The "new competitor" number 4 has to use the same starting point which was chosen in the captain meeting thursday night for the competitor 1-3. There will not be any possibilities to change the starting point in the competition after the captains meeting in 5.9 Thursday evening. Reserve zones (women and men) will have only one starting point and goal area.

Thursday 5.9 16.30 pm at the Team registration all the captains have to show the valid Danish Fishing Licences for all the competitors (also reserve members). It is not possible to take part in the competition with out the Danish Fishing licence.

Competition time is 5 hours per day. By Fin Swimming. Langeland and Sprogø area it is not possible walk on the land. Or walk in the shallow water. Of course competitor can rest in the shore.

Only the International Judge Cmas Technical Delegate or the Competition Director may decide, by mutual agreement, any change in the competition areas if necessary. In case of disagreement the CMAS Technical Delegate International Judge will make a decision.

A count of participants and confirmation will be made before leaving the harbor to competition area. All competitors must follow the Competition Director car or boat back and forth the competition area.

Once arrived at the corresponding competition area, there will be a new recount of participants and the time for starting and finishing the fishing event will be communicated. The meeting point and the margins of time to pass the control once the fishing time expired will also be communicated at that moment.

Only in the event of adverse meteorological (whether or sea) conditions, and the Security coordinator agreeing informing previously with the CMAS Technical Delegate International Judge, will decide the partial/total cancellation of the fishing event. The CMAS TD International Judge has total autonomy and responsibility for canceling totally or partially any fishing event, for any organizational issue or due to weather conditions, even reducing the time or the fishing area.

If the competition had to be cancelled owing to circumstances beyond our control or adverse meteorological conditions, the championship would be only valid if 2/3 of the time of event has been completed. The competition consists of two consecutive days of 5 hours each. The competitor must be back at the starting points before the 5 hours expire. If a competitor returns later than the 5 hours, there will be a 500 points pr. started minute. If the competitor returns later than 15 min in the goal area, he/she will be disqualified that day

8. BOATS

If teams need boat to scout, they should bring them from home. There are also some possibilities for rental boats in Svendborg and Langeland area.

At the Sprogø competition all competitors will be brought back and forth to Sprogø in big boats. During the two competition days, captains are only allowed in competition areas in mutual Captains boats pointed out by organizer. Other boats are not allowed in competition zones.

9. ALLOWED EQUIPMENT

One or more spearguns of rubber bands or compressed air, using athlete's muscular effort. Fins, masks, snorkels, torches, weight belt, spears and hooks, knives, neoprene wetsuit, gloves and dive computer,

GPS, fishing sonar, small marking buoy, radio transmitters, mobile phones and the complimentary official buoy with the register number.

It is forbidden:

Carrying fish in the belt or any other place than the buoy or in the buoy line.

Have loaded speargun on board boats

Have loaded spear gun hung on buoys.

To take any fish from the nets or take the dead fish. All fish will be check during the fish weighting.

If the competitor is entering the safety boat during the competition. She or he will be disqualified for that day.

10. DANISH LEGAL REQUIREMENTS FOR TRAINING SESSIONS

STATEMENT OF LIABILITY. Participation in the Euro-African Championships takes place at athletes' own responsibility. The hosting federation is not liable for personal or material damage.



Teams that fish or simply dive in DANISH waters during the training sessions (any time before the competition) must apply for a Danish fishing license : <https://www.fisketegn.dk/fisketegn/common/setupAnglerFisherType.do>. Spearguns are allowed in the boats if after or before the scouting the teams wish to go fishing outside of the competition area. Each scouting boat must have visible minimum 50x50cm blue and white diver flag on the boat.

Organization is not responsible for any inconvenience caused by Coast Guard or authorities controls if competitors do not obey the existing Danish legislation.

During the competition days competitors are not covered by the DANISH DIVERS FEDERATION.

14 days before the day preceding first day of competition session inside of the competition zones it is forbidden to train or do examining activities using spear guns, scuba diving breathers or underwater scooters.

Competition areas will be closed the day before the competition session (Thursday 21 pm) and it is totally forbidden to go inside of the competition areas during the Friday 6.9

11. FINAL CLASSIFICATION

Individual classification: It will be determined by the sum of the two days punctuation and it will be expressed on percentage. In case of punctuation draw it will count the higher number of valid captures, if equality is maintained it will count the biggest capture.

National Teams classification: It will be determined by the sum of the two days punctuations of every nation competitor and it will be determined on percentage.

12. DISCIPLINE:

Detailed below as stated in Cmas SF International Rules VERSION 01.01.2019 (COPY AND PASTE)

12. Competition Discipline.

- All members of the registered teams are obliged to know and respect the rules of the competition.
- At all times the judges have the authority to intervene should the rules not be respected.
- The CMAS Technical Delegate can implement the sanctions of:
- Warning
- Exclusion for the day.
- Exclusion from the Competition / Championship
- All those who committed offences before the beginning of the competition will not be allowed to take part in the competition.
- The Judge must inform the competitor of the infringement once it is official.
- Once the competitor is informed, the Judge must inform the CMAS Technical Delegate to decide about the sanction.
- If the competitor who receives the warning has already received another warning the CMAS Technical Delegate will order his immediate disqualification for the day.
- The competitor who is totally disqualified from the competition loses all rights to the classification in the Competition.

13. Infringements punishable with warning

- To arrive late at the control points planned by the Organization, except for security reasons.
- For incorrect behaviour towards other competitors or the Judges.
- To move away more than 25 meters from the official buoy.

- To load or to maintain the spear gun in a loaded state on shore, on the buoy, the fishing board or on the support boat.
- To have a buoy not in conformity with the Rules.
- To not declare to have caught the total number allowed for a certain species of fish, as stated in the Particular Rules.
- During the time of competition, to be/dive out of the limits of the competition zone up to a distance where this could be considered as accidental and not intentional.
- To have obtained help to recover the buoy.
- To present for weighing a fish speared by another competitor and left at the surface or at the bottom with evident signalization or a fish that was brought to the surface after the lapse of the competition time. The fish will not count and will be invalid.
- To present the catch in a bag with or without water, different than the one provided by the organization. Apart from the warning, the catch will be weighed at the end of the weighing after removal of the bag and the water.
- To violate any other provision in the rules not specifically provided for in this article 6.

14. Punishable Infringement with disqualification for the day

- Two warnings, in the same competition, will be immediate disqualification for the day.
- Carrying fish at the belt or keeping catches at any place out of buoy line or official buoy.
- During the time of competition, go out of the limits of the competition zone beyond a distance where this is considered as intentional.
- To be in the Competition Zone, before the Official start signal, leave the competition zone before the end of the day of competition or without passing check control of arrival, without getting permission of CMAS Technical Delegate or Director of Championship, through Boat Commissioner request.
- To stay in the sea after the official time of the end of the competition, ignoring the prompts about end of time from Boat Commissioner.
- To be dragged by boat in the water under any circumstance except emergency or safety reasons.
- To use the Freediver Recovery Vest without previous notification of the CMAS Technical Delegate and initialing of its gas capsule..
- To inflate the Freediver Recovery Vest (even if by accident) or not to present its gas capsule for inspection after the end of each competition day.

15. Punishable Infringement with total disqualification (Deleted from official classification):

- Aggression towards other Competitors, the Judges or the Members of the Organization before or during the competition.
- To fish species prohibited by the National Legislation, specified by the Organizing Country or to infringe any fishing local law.
- To replace the catches of the regulated species or exchange them between athletes..
- To use any type of scuba diving or breathing apparatus.
- To be (diving or cruising) in the Competition Zone, with or without speargun, before the Official start time in the days of competition.
- To return or leave in water catches of any kind / category: not valid, forbidden or valid species of any weight.
- Weighing fraud.
- Use of exploding tips, luparas, and / or any gadget with explosive power or any system which is not charged by human physical effort.
- During official time of competition as well as along the official period of zone visit before use any diving breathing system, use of submarine propeller gadgets as "torpedo".
- Catching EAL during the competition.

COMPLAINTS

- Each participating team has the right to place any complaint to the International Jury.
- Only the captain of the team will sign and present a complaint.
- Any complaint will have to be accompanied by a guarantee; the amount is fixed by the CMAS: 100 €.
- A complaint must be presented in writing, in French, English or Spanish to the CMAS Technical Delegate:
- Before the weighing for those regarding the competition.
- During the weighing for those regarding the weighing and concerning the weighing itself
- With regard to an error in the classification, the presentation for a complaint must be made with the

CMAS Technical Delegate within 15 minutes following the publication of the classification and accompanied by the payment of the necessary financial guarantee (this procedure will cause immediate delay in the protocol ceremony for the presentation of the medals).

- The time to prepare and present a complaint. The plaintiff will have a 30 minutes deadline to write and present his report to the CMAS Technical Delegate. Failure to meet the deadline the complaint will be regarded as not valid with the loss of the guarantee.
- The complaint will be declared inadmissible if these conditions are not met
- If the complaint is successful the guarantee in cash will be returned. If unsuccessful the guarantee in cash remains with the CMAS. If, however, during the hearing of the complaint, the Technical Delegate establishes that the complaint was wilfully fraudulent in order for an innocent athlete to be punished or disqualified with the purpose of the country the captain of which made the complaint to gain fraudulent advantage, the Technical Delegate may at his discretion impose a penalty of 20 percentage points to the athlete and/ or 60 percentage points to the team from their end result depending on if the fraud lay with the athlete or with the captain of the country that filed the complaint. If the country is penalised, the 60 percentage points will only be subtracted from the nations' classification of art. 6.3.6.

REGULATORY CONTROL

The CMAS TECHNICAL DELEGATE

In the CMAS Championship, the CMAS TD is proposed by the Fishing Commission and approved by the CMAS Board of directors. He has full Powers and authority on judges, commissioners and organization staff until the publication of the official results. He must approve their election and give them instructions about the competition specific regulations. CMAS TD objectives are:

- A) Inspection of competition facilities.
- B) Confirming and signing the classification before the publication.

The International Judge CMAS TD must apply the Regulation and the CMAS decisions and resolve all emerging doubts, which are not included in the Regulation. He must check that all the commissioners are in their position and appoint substitutes or remove the incompetent ones. He can also appoint new officials if necessary.

The International Judge CMAS TD gives the starting signal once the Judge members (commissioners, organization and security members) are in their positions and ready. The CMAS TD International Judge can cancel the competition without consulting it with the competition director or the organization:

On any adverse meteorological circumstance or security reasons (after consulting with the security coordinator). If competition areas or facilities do not fulfill regulation requirements.

INTERNATIONAL JURY

A unique member constitutes it, the CMAS TD, appointed by CMAS BoD and elected by the Spear fishing Commission. The Jury aim is to examine the complaints and take a decision. International Jury decisions cannot be appealed except that new piece information comes up. Decisions must be communicated in writing immediately. The CMAS delegate will act as secretary if necessary, without having the right to vote. The CMAS TD, functioning as International Jury, will be assisted (if required) by a Competition Committee formed by the Competition Director and 3 team Captains (who do not compete) appointed by the CMAS TD. International Judge.

The functions and responsibilities of the Competition Committee are advising and supporting the International Judge whenever is required. The committee will not take a decision except in the event of CMAS TD inability.

REGULATION INTERPRETATION

In cases not included in this specific regulation, the CMAS International General Regulation for spearfishing competitions will be applied.

ANTI-DOPING CONTROL

According to the Danish Anti-doping Agency, the control might be made whenever during the Championship. RESPONSABILITIES

The world Submarine Activities Confederation CMAS, the Organization Federation, the Competition Director, the Commissioners and all related members will not held responsibilities for accidents or

Equipment lost that may occur before, during and after the championship to participant or third parties.

15. ACTIVITIES SCHEDULE

From Thursday 5.9 to Monday 9.9 Christiansminde hotel Svendborg, Denmark

THURSDAY 05.09

15.00 h. Check in Christiansminde hotel

16.30 h. Team inscription

19.00 h. Dinner

20:30 h. Captains meeting.

FRIDAY 06.09

07.00 h. Breakfast

09.00 h. Captains team meeting.

12.00 h. Leaving by bus to Naturama

12.30 h. Movie and speech Naturama

13.00 h. Lunch Naturama

14.00 h. Opening ceremony Svendborg City and harbor

16.00 h. Coctails Kammerateriet

19.00 h. Dinner Christiansminde

SATURDAY 07.09

06.00 h. Breakfast

07.00 h. Leave by bus to 1 day area Langeland (30 minutes drive)

08.30 h. Short briefing

09.00 h. Competition session beginning

14.00 h. Competition session ending

16.30 h. Weighing Kammerateriet Svendborg harbor

20.00 h. Dinner

SUNDAY 08.09

05.00 h. Breakfast

06.00 h. Leave by bus to Nyborg marina (20 minutes' drive).

07.00 h. Leave by boats to Sprogø

08.30 h. Entering the starting points

09.00 h. Competition session starts

14.00 h. Competition session ending

15.30 h. Port arrival

17.00 h. Weighing Kammerateriet Svendborg harbor

20.00 h. Closing Dinner and award ceremony

MONDAY 09.09

7.00 h. Breakfast (Championship ending)

10.00 h. Check out Christiansminde hotel

NOTE- Timetables can be modified due to necessities.

For hotel reservations please contact the Main Secretary of the Organising Committee, William Siefert
E-mail: williamsiefert@sol.dk

Please ask possibilities for weight rental at Svendborg
Please ask link to buy Danish sea maps

Accommodation should be paid by bank transfer, clearly marked "EA Championships, Spearfishing 2019,
Recipient of the payment: DANISH Divers' Federation
Bank: Dansk Sportsdykker Forbund, Idrættens hus, Brøndby stadion 20, 2605 Brøndby
IBAN Account number: DK0230000005533996
BIC code: DABADKKK

Last day of payment: May 1'st 2019

Should you need more information about the city of Svendborg, please contact the very helpful and professional tourist office. <https://www.visitsvendborg.dk/svendborg/visitsydfyn>
In addition to the costs outlined above, all athletes must be in possession of an individual sport license and each federation will need to pay the federation fee directly to CMAS, Rome. The required forms for these payment are available from CMAS.

16. ENROLMENT

Each team is enrolled by returning the registration form (entry form), and the organizers will confirm the successful enrollment of each team.

17. MEDICAL CARE

First Aid is available in competition.

18. CONTACTS DETAILS

William Siefert
Main secretary of the organising committee
Address: William Siefert
Krathus Skovalleen 44
2880 Bagsvaerd
Denmark
Mobile : +4521219745
E-mail : williamsiefert@sol.dk

DANSK SPORTSDYKKER FORBUND

Idrættens Hus · Brøndby Stadion 20 · DK 2605 Brøndby · Tlf. 43 26 25 60 · dsf@sportsdykning.dk

19. SPECIAL REQUESTS:

In case you wish to make any special reservations, please contact the main secretary of the organizing committee:

E-mail: williamsiefert@sol.dk

With best regards
William Siefert
Main secretary of the Euro-African 2019 Svendborg, Denmark



SVENDBORG, DENMARK

5 - 9 september 2019





XXXII CMAS Euro African championship – Langeland 1 st competition day Men

There is couple important safety issues:

If competitors will have cramps or they are feeling tired. Of course there is option to swim to the land and rest. BUT IT IS NOT POSSIBLE TO WALK ON THE LAND or IN THE SHALLOW WATER.

All competitors have to choose a starting point (goal area is the same) at the captains meeting Thursday night 5.9

Team Captains have to give the list of the competitors starting points the beginning of the captain meeting.

It is not allowed to start in one and then end up in another goal area of competition.

There will be following basic rules and important things to notified:

There will be two start and goal areas. Starts & Goal area will be 100 meter wide area along the coastline.

This means that all the competitors have enough space to start and finishing the competition. The area will be signed by yellow plastic line. So it is very visibly in all weather conditions.

All the competitors have to enter the same "goal area" whre they started after 5 hours.

TIME SCHEDULE :

06.00 h. Breakfast

07.00 h. Leave by bus or car to 1 day area Langeland (30 minutes drive)

08.30 h. Short briefing

09.00 h. competition session beginning

14.00 h. competition session ending

17.00 h. Weighing Kammerateriet Svendborg harbor

20.00 h. Dinner

Men area

Area is defined by the following GPS marks, WGS 84.

1. 54° 43,630N 10° 42,853E
 2. 54° 43,138N 10° 44,869E
 3. 54° 45,006N 10° 46,358E
 4. 54° 49,312N 10° 46,516E
 5. 54° 49,039N 10° 48,310E
- Start & Goal area 54°45,041N
10°44,263E and 54° 47,612N
10°45,551E

Start and goal area two separate points of the competition zone. There will be 3 km of shoreline in each direction (North/South) to the end of the area and 2 km out from shore. There will be two start/goal areas in order to make the best fishing for every body so we don't have to fish un top of each other. The start and goal areas will be clearly marked with a red and white band and will be 20 x 50 meters. From this zone all competitors will have to start from the water 1 meter away from the shore. When start goes, you can swim inside the 11 x 2 km competition zone. Walking in the land is forbidden.

After 5 hour all competitors has to be back in the same start/goal zone with their catch.

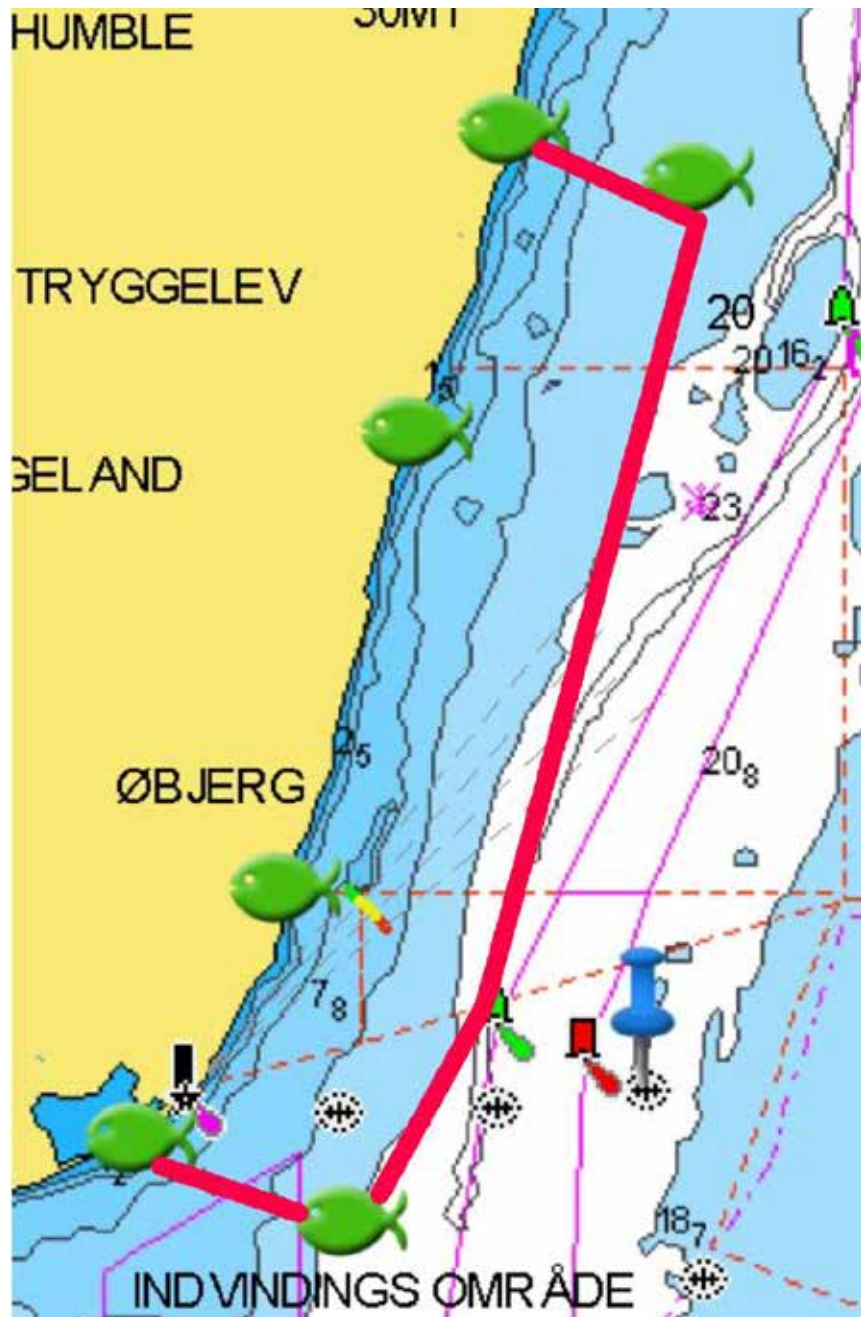
It is allowed to go to shallow water and rest, but not to walk in area instead of swimming. The athlete has to carry all his gear and fish at all time. Also before entering the goal area, weights and rest of gear has to be with the athlete.

The zone will be marked with big orange flags in both north and south end and from shoreline the zone goes 2 km out and will also be marked with orange buoys.

Captains and other spectators are not allowed to be in competition zone in boats – only following from shore. They may only look and it is forbidden to carry or help the athletes during competition.

About the end of the competition:

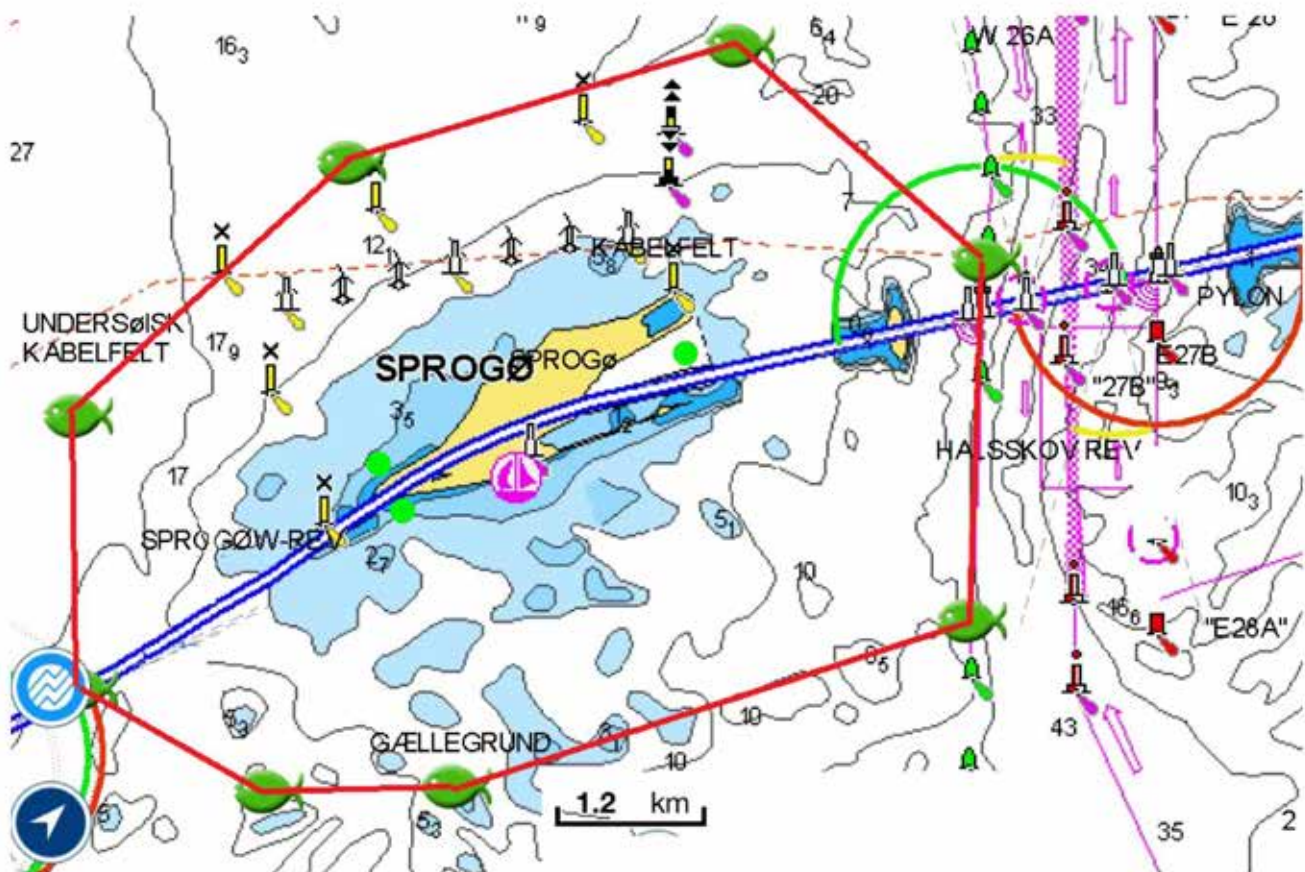
The competitors is entering the "goal area" Judge is checking that competitor is feeling ok. He will be given bottle of water. Then the competitor can enter with his catch to the Photo wall for a photoshoot. After that competitor number is checked by the judge. The catch will be put into the bag with the competition number. Competition number will also be putted outside of the bag.



XXXII CMAS Euro African championship – Sprogø 2 nd competition day Men

05.00 h. Breakfast
06.00 h. Leave by bus to Nyborg marina (20 minutes' drive).
07.00 h. Leave by boats to Sprogø
08.30 h. Entering the starting points
09.00 h. Competition session starts
14.00 h. competition session ending
15.30 h. Port arrival
17.00 h. Weighing Kammerateriet Svendborg harbor
20.00 h. Closing Dinner and award ceremony

The area is defined by the following GPS points (wgs 84)



1. 55° 20,667 N 11° 01,537E
 2. 55° 19,110N 11° 01,433E (the last big pillar and 15m to the east is included in the area, don't swim further into the shipping lane from here. Very big container ships pass this international shipping route...)
 3. 55° 18,456N 10° 57,628E
 4. 55° 18,437N 10° 56,246E
 5. 55° 18,866N 10°54,884E
 6. 55° 20,010N 10°54,848 E
 7. 55° 21,075N 10° 56,857E
 8. 55° 21,567N 10°59,715E
- Start and zones will be 55°19,695N 10°56,755E and 55°20,648N 10°59,105E

All competitors have to choose a starting point at the captains meeting Thursday night 5. September. There will be 2 start & goal areas near the island of Sprogø. One in east and one in west. The west goal area will be north or south side of the Sprogø depending of the wind direction. From Sprogø It is allowed

to start in one and then end up in another at the end of competition.

The zone is from the coastline of Sprogø and 2 km around. The pylon (tall one) on the east bridge is where

it stops. After that is the ships fairway – and therefore no go.

On the west bridge it is also 2 km out – area will be marked with orange buoy.

In north of Sprogø all of the windmills are inside the area. They are about 600 meters from Sprogø. The wreck 3,1 km north of Sprogø is out of the area and therefore no go.

Competitors don't have to be connected to the boye all the time. But it is recommended. Because in Denmark the bottom is normally sandy so minimum 2 kg weight is recommended to keep the official competition buoy (hunter) still in the open sea.

30 minutes before start all competitors are allowed to enter the water and rest on their buoy (no loaded

spearguns).

Before the start they have to go past the commissioner boat and hand in their register tag nr 1.

The commissioner boats start the competition at 09:00.

There will be Marine vessels, 2 commissioner boats, safety boats and the captain boats patrolling the area and watching for safety and good sportsmanship.

In the starting/goal areas there will at all time be commissioners and boats as well.

Before the 5 hours are completed all competitors have to get back to one of the two goal/start areas.

Here the commissioner boat will await them and they have to hand in their register tag nr. 2.

After that they will go to the big boat with their catch. Here there will be a photo shoot, before their catch will enter their bag with their name and number inside and their number on the outside.

When the two commissioners have made the headcount all competitors gathers in the boats and will head back to harbor.

On the island of Sprogø it will not be possibilities to walk in the land. It is strongly forbidden by the Danish government. It is only swimming. You may rest in the cost line.

CMAS first female spearfishing championship 2019 1 st day Langeland

At Langeland the start/ goal area will be at Bukkemosen and run 2,5 km North and South and 2 km out. All the zone will be marked with flags and buoys, so it is easy to see from seaside.

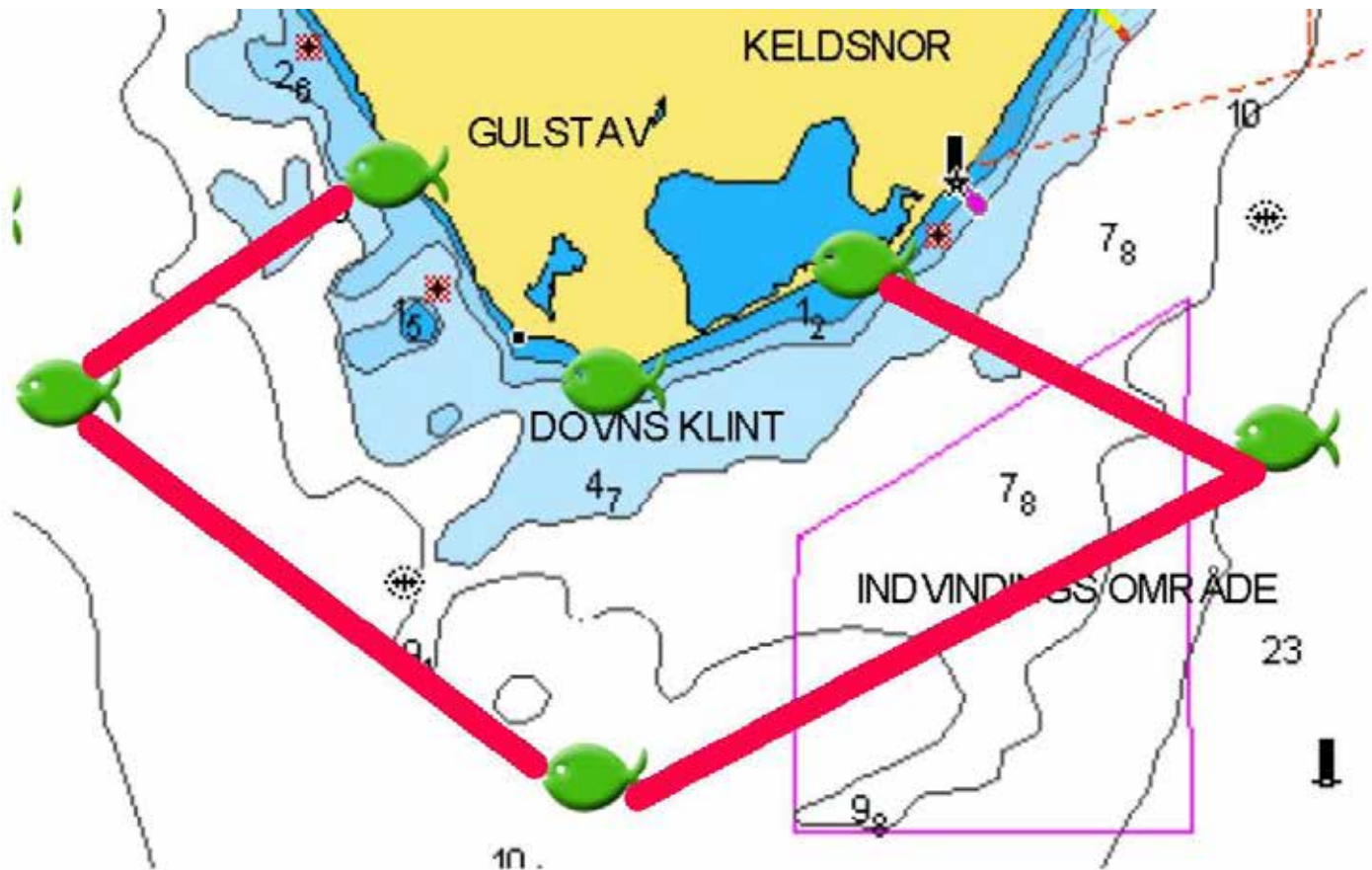
It is forbidden to walk on the land or in the shallow water.

There will be at least one safety boat in the area.

After the 5 hours, all competitors have to be back in goal area with all their gear and catches.

About the end of the competition:

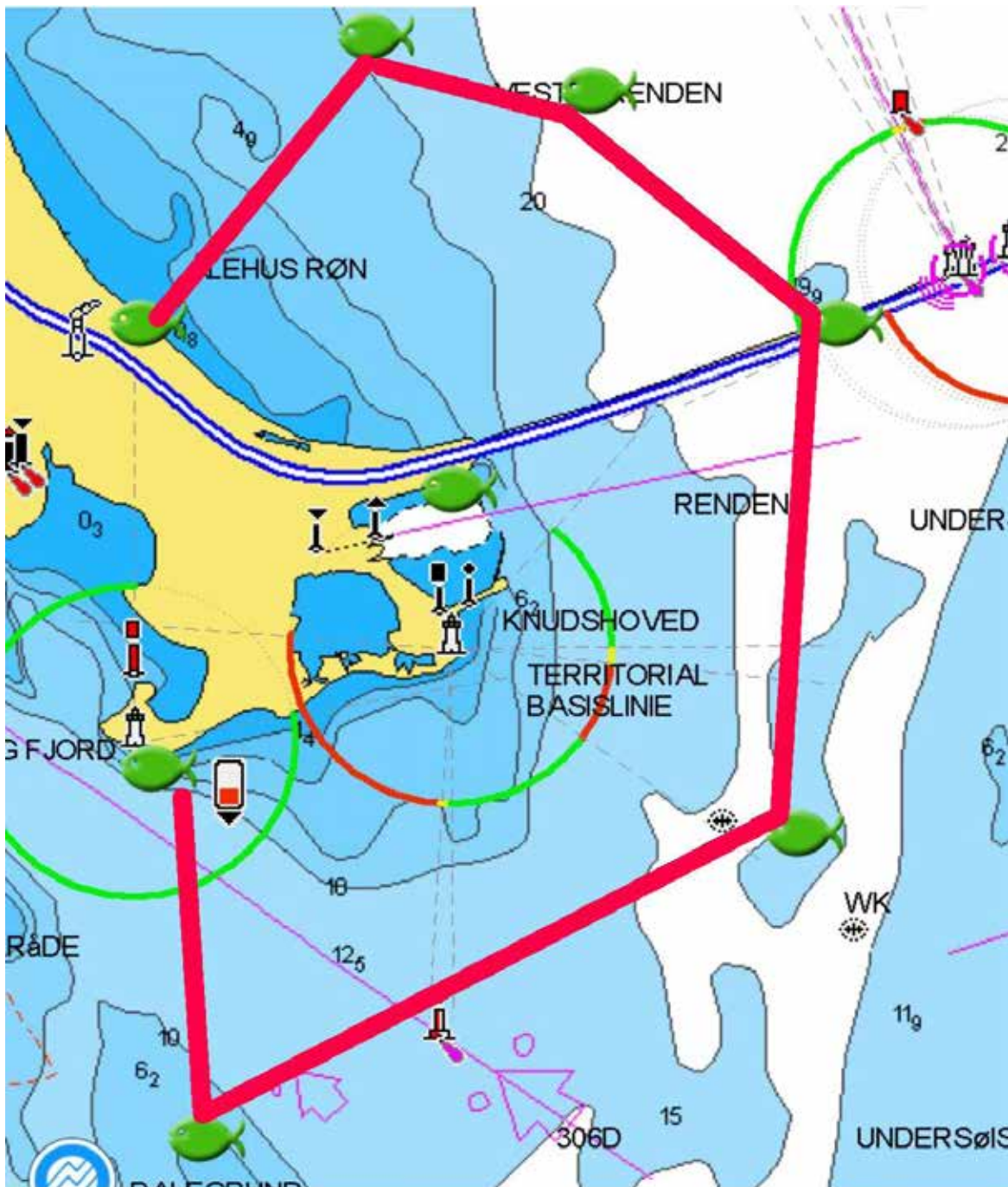
The competitors is entering the "goal area" Judge is checking that competitor is feeling ok. He will be given bottle of water. Then the competitor can enter with his catch to the Photo wall for a photoshoot. After that competitor number is checked by the judge. The catch will be put into the bag with the competition number. Competition number will also be putted outside of the bag.



1. 54° 47,186N 10°45,262E
2. 54° 46,851N 10°47,007E
3. 54° 50,018N 10°46,777E
4. 54° 49,684N 10°48,524E

Start 54° 47,924N 10°45,712E

2nd day Nyborg



1. 55° 17,073N 10° 49,655E
2. 55° 16,000N 10° 49,894E
3. 55° 16,889N 10° 52,827E
4. 55° 18,370N 10° 53,035E
5. 55° 19,045N 10° 51,811E
6. 55° 19,203N 10° 50,714E
7. 55° 18,373N 10° 49,592E

Start 55° 17,891N 10° 51,134E, the competitors will start from the water floating on their bouy.

The competition will as well as the Men's championship, be a swimming competition without use of boats. At Nyborg the start and goal zone will be a marked area (30 x 30 meter marked with yellow plastic band) on the grass near parking lot. The competition will start close to the bridge from the water. It is forbidden to walk on the land.

In this zone there will be a commissioner that will check all competitors before and after competition.

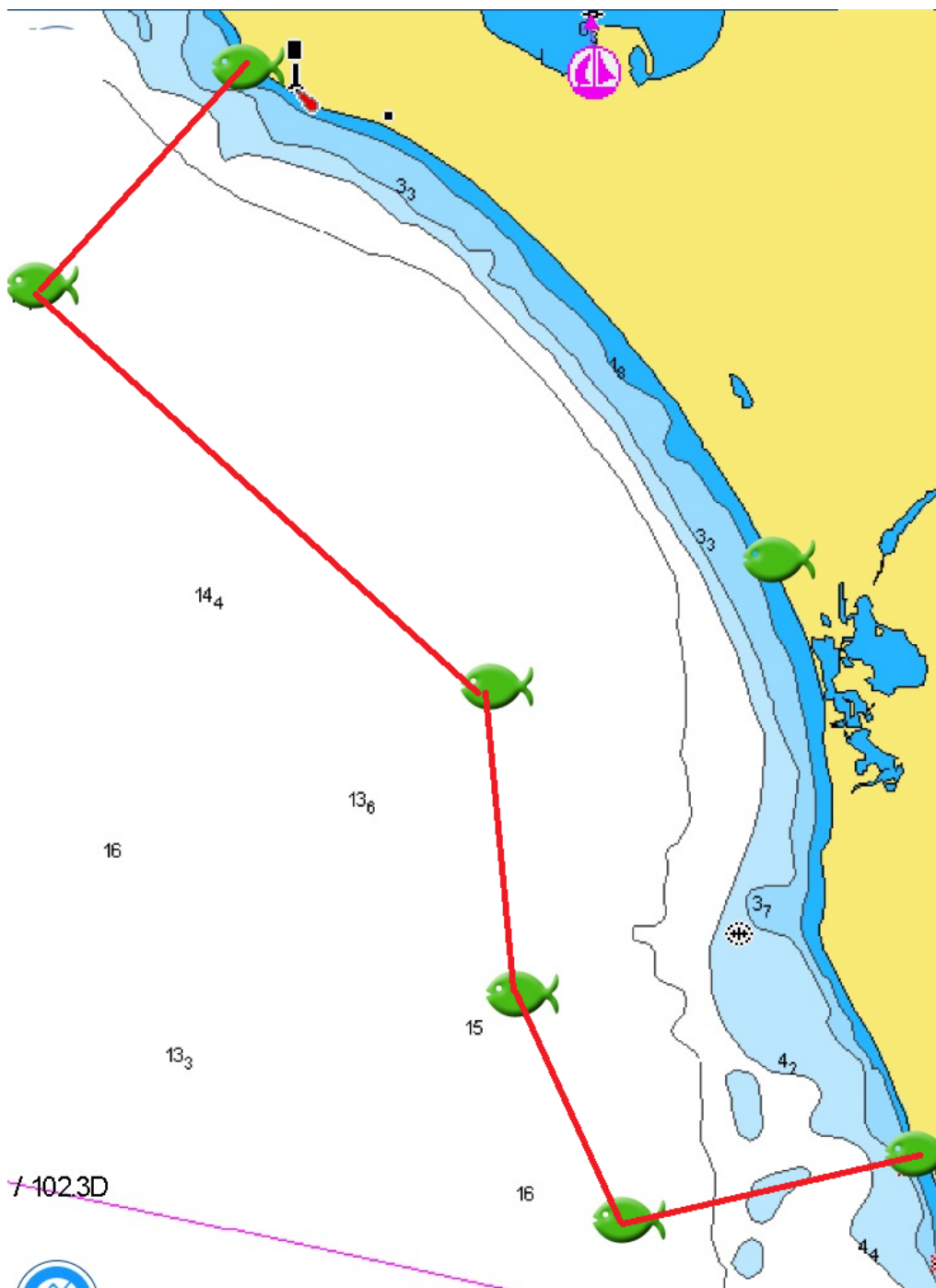
After 5 hours they have to be back in same area with all their gear and the catch. It is not allowed to leave weight belt and other gear in coastline.

It is also allowed to fish inside the harbor, but be aware of fishermen/anglers on the piers. Keep good distance and show good sportsmanship.

The area is 2 km in all directions and will be marked with orange flags on land and buoys in water.

There will be 2 safety boats – one South and one North of the bridge. After competition and photoshoot the fish will be put into a bag with the competitors name and number inside and their number on the outside.

XXXII CMAS Euro African championship - Reserve zones



This area will only be used in cases of strong wind from the East or other safety related matter.

Langeland:

Men Reserve zone.

1. 54° 43,876'N 10° 40,582'E
 2. 54° 43,282'N 10° 39,006'E
 3. 54° 43,630'N 10° 42,853'E
 4. 54° 43,152'N 10° 44,893'E
 5. 54° 42,230'N 10° 41,539'E
- Start and goal 54° 43,309'N 10° 41,641'E



Reserve zone women:

1. 54°43,876N 10°40,582E
 2. 54°43,282N 10°39,006E
 3. 54° 45,019N 10° 40,158E
 4. 54° 45,367N 10°38,382E
 5. 54° 43,768N 10°38,524E
- Start area 54°44,506N 10°40,230E

Further clarification for flatfish:

In Denmark we have several species of flatfish, some are rare to catch during competition like sole or brill. Others Like flounder is very common, with dab, plaice and turbot being common catches. Especially flounder and plaice can be difficult to differentiate, just because the fish has some red spots, it is not necessarily a plaice

Category 4 (500g)

The brill and turbot is round with large mouths, these fishes can be differentiated by the skin, brill are slippery and turbot have bone spikes.

Both fishes are not common to catch more than one or two during competition.

Turbot (*Scophthalmus maximus*)



Above is turbot, note bone spikes and large mouth. Shape is almost round.

Brill (*Scophthalmus rhombus*)



Above is brill, large mouth and without bone spikes.

Category 3 (300g)

Dab (*Limanda limanda*):



Above is dab, the sideline makes a curve at the pectoral fin, the scales are large and the eyes are pointy like telescopes. The dab is rough when touched from tail towards head but slippery when touched from head towards tail.



Another dab above, beware that many dab are not 300g... Be careful not to bring too small dab to the weighting.

Plaice (*pleuronectes platessa*)

A common fish, many competitors will catch plaice. Be carefull not to mistake it with flounder.



Above is plaice, the bone projections near the head is marked. The red spots are very clearly defined and the fish is slippery like a eel/conger all over the body.



Plaice

Plaice above, with the bone projections near the head is marked. Note the red spots are very bright.



Plaice underside, transparent white with the zigzag pattern.



Flounder (*Platichthus flesus*)

A very common flatfish, likely all competitors will catch flounders.

Beware this fish might have some red spots... But that will not make it a plaice.

The red spots that some flounders have (but not all) is not well defined and not very bright.

The fish skin is rough like sandpaper when touched from all sides. Sometimes it is mostly at the head and side of the skin it is rough.

The underside is never transparent with zigzag pattern.



Above, flounder with some red spots that are not well marked and not very bright. The skin is rough like sand paper]

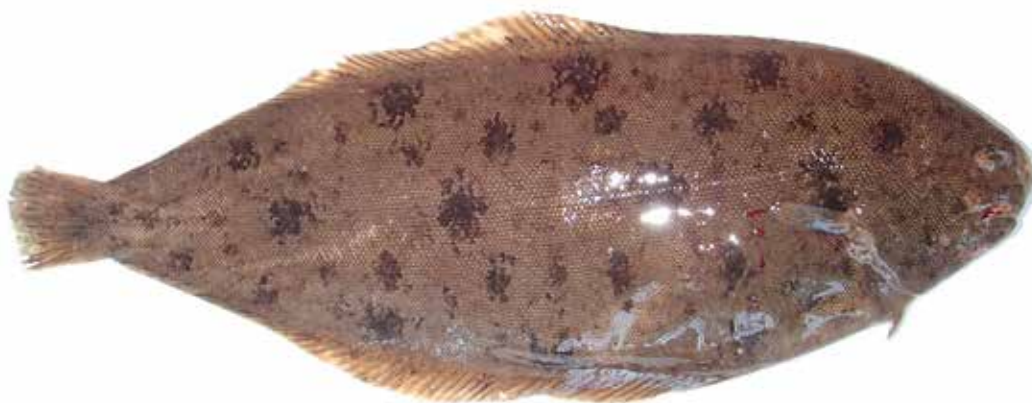


The underside of flounder is white, non transparent, with out zig zag pattern.



The flounder is always rough on the skin like sandpaper in the area marked near the fin.

Sole (*Solea solea*)



Above is sole, the shape is very elongated and the mouth very curved. Sole is an uncommon catch and most will not even see one in Denmark during scouting



SVENDBORG, DENMARK

5 - 9 september 2019

