



# **XXXI EURO-AFRICAN SPEARFISHING CHAMPIONSHIP**

## **PARTICULARS RULES**

**MALI LOŠINJ, CROATIA, 13-17 SEPTEMBER 2017**



## **PARTICULAR RULES**

1. **ORGANIZATION AND CONTROL**
2. **REGISTRATION**
3. **CHAMPIONSHIP**
4. **ALLOWED EQUIPMENT AND TOOLS**
5. **CONTROL METHODS**
6. **COMPETITION START AND FINISH**
7. **COMMISSARIES AND JUDGES**
8. **SCORING AND CLASSIFICATION**
9. **VALID, NO VALID AND BANNED PIECES**
10. **REGULATORY FRAMEWORK AND SANCTIONS**
11. **COMPETITION ZONES AND RESERVE ZONE**
12. **ANTI-DOPING CONTROL**
13. **RULES INTERPRETATION**
14. **RESPONSIBILITIES**
15. **ACTIVITIES PROGRAM**
16. **ORGANIZATION CONTACT DATA**



## 1. ORGANIZATION AND CONTROL

The “Confederación Mundial de Actividades Subacuáticas” CMAS (World underwater activities confederation) has delegated to the “Hrvatski savez za sportski ribolov na moru” HSSRM (Croatian federation of sports fishing on sea), the organization of the “XXXI Euro-African Spearfishing Championship” (The Thirty-first Euro-African Spearfishing Championship) , that will take place between the days 13th to 17th of September 2017 in the city of Mali Lošinj, Croatia.

### XXXI EURO-AFRICAN SPEARFISHING CHAMPIONSHIP PARTICIPATION RULES

Classified countries that will participate in the XXXI Euro-African Spearfishing Championship are the following:

#### ZONE - EURO-AFRICAN

**Croatia (host)**

**Greece**

**Spain**

**Portugal**

**Italy**

**Bulgaria**

**Turkey**

**Ukraine**

**Finland**

**Cyprus**

**Russia**

**Great Britain**

**Tunisia**

**Denmark**

**Slovenia**

**S. Marino**

**Marocco**

**Alger**

List given by CMAS Spearfishing Committee. Valid for registered National Federations keeping up to date their Spearfishing CMAS Committee Membership Payment when formalizing their inscription

#### COMPETITION COMMITTEE:

**CMAS Technical Delegate –**

Director of Competition–

Three (3) no competitor captains, appointed in the technical meeting.

#### TECHNICAL CONTROL:

- **CMAS Technical Delegate -**
- **Competition director -**



- **Technical and Safety Judge –**
- **General Secretary -**
- **Medical assistance –**
- **Judge for the Protocol Ceremonies –**
- **The Boat Commissioners**
- Rescue Boat with DUE, TWO PROFESSIONAL DIVERS, LIFEGUARD AND SECURITY RESPONSIBLE, WITH MATERIAL AND MEDICATION TO START AN ADVANCED RPC.
- On coast land, an ambulance available with expert personnel at emergency.
- Hyperbaric chamber
- Committees and Organization

## 2. REGISTRATION

Templates of registration must be sent by e-mail to [srd.udica.ml@gmail.com](mailto:srd.udica.ml@gmail.com). The affiliated federations to CMAS Sports Committee could register their National Teams (up to six persons per delegation) by email. The representatives of each country must be older than eighteen years old and they must have the nationality of the country they represent in championship. They must send for every member of team: first name, surname, CMAS Sports License Number.

Each national team must bring flags and the anthem of their own country in electronic form or cd.

### EACH NATIONAL TEAM CAN BE OFFICIALLY FORMED FROM UP TO SIX PERSONS:

- **Three athletes,**
- **A reserve athlete,**
- **A team captain, who could be one of the four athletes,**
- **A doctor of the team.**

### Registration quotas

Team members	INSCRIPTION WITH HOTEL Half Board 4 nights + Boats + Souvenirs + Opening and Gala Dinner			INSCRIPTION + Boats+ Souvenirs + Opening and Gala Dinner		
	Reserve by 1 <sup>st</sup> June 2017	2nd payment 15 <sup>th</sup> August 2017	Total Inscription	Reserve by 1 <sup>st</sup> June 2017	2nd payment by 15 <sup>th</sup> August 2017	Total Inscription
6	2.100,00 €	2.100,00 €	4.200,00 €	1.450,00 €	1.450,00 €	2.900,00 €
5	2.000,00 €	2.000,00 €	4.000,00 €	1.350,00 €	1.350,00 €	2.700,00 €
4	1.900,00 €	1.900,00 €	3.800,00 €	1.250,00 €	1.250,00 €	2.500,00 €
3	1.600,00 €	1.600,00 €	3.200,00 €	1.150,00 €	1.150,00 €	2.300,00 €
2	1.400,00 €	1.400,00 €	2.800,00 €	950,00 €	950,00 €	1.900,00 €



**Registration: covers Organization and general expenses of championship.**  
**Hotel accommodation / Inn: bed & breakfast for four (4) nights + half board meals**  
**Boat: One boat for each competitor.**

Additional members of team or companions **HOTEL accommodation (bed & breakfast for four (4) nights + half board meals) + Opening Event Dinner + Award & Closure Dinner + lunch on competition days: 300 € per person.**

Registration cost includes:

- Accommodation, breakfast and half board in the **Lošinj Hotels & Villas Wellness Hotel Aurora \*\*\*\***  
Sunčana uvala 4, 51550 Mali Lošinj  
T: +385 (0)51 667 200  
F: +385 (0)51 667 222  
E-mail: [aurora@losinj-hotels.com](mailto:aurora@losinj-hotels.com)  
GPS coordinates: 44.52310806573268,14.458919763565063
- Boat for each competitor, in two (2) competition days.
- Two main dinners: Closure day and Opening day.
- Internal transfers from hotel to the Center and weighing zone.
- Souvenirs kit
- Ice for catches, fresh fruit and water for the competitors for the days of competition.
- **An additional discount of € 200 per day will be applied for each competitor that uses his own boat, over registration fees of modality 1 or 2.**
- **Participants / teams that have rented boats during scouting time and wishing to keep the same boats for the 2 competition days (as their portable GPS and Sounder might already be installed and difficult to be reinstalled and tested the day before competition) must state this latest upon registration on 13th September 2017. This would mean that those boats will be treated as own boats and not included in the boats drawing and not be fueled and payed for by the organisation. An organisation commissioner is going to be appointed to each one of the own boats accepted from the organisation. The 200 € per day discount for each boat will be applied.**

**Federations with right to participate must no later than 3 months before the start of the championship register their national team electronically via the CMAS [website](#). The CMAS website online registration will no longer be available after such deadline.**

**To register for the championship, Federations with a right to participate must fill in and send the [Initial Entry Form](#) to the Srd "Udica" Mali Lošinj ([srd.udica.ml@gmail.com](mailto:srd.udica.ml@gmail.com)) and the HSSRM - Croatian federation of sports fishing on sea ([cfosa@ri.htnet.hr](mailto:cfosa@ri.htnet.hr)) by e-mail not later than 31<sup>st</sup> March 2017. If the Federations with right to participate miss that deadline, countries from the waiting list will be accepted to the championship.**

**To finalise registration for the championship, participating Federations must fill in and send the [Entry Form](#) to the Srd "Udica" Mali Lošinj ([srd.udica.ml@gmail.com](mailto:srd.udica.ml@gmail.com)) and the HSSRM - Croatian federation of sports fishing on sea ([cfosa@ri.htnet.hr](mailto:cfosa@ri.htnet.hr)) by e-mail not later than 1<sup>st</sup> June 2017 along with the transfer slip of the 1st installment of the Participation Fee. If the**



**Federations with right to participate miss that deadline, countries from the waiting list will be accepted to the championship (2<sup>nd</sup> deadline).**

**Payment of the Participation Fee will be performed by Bank Transfer to the account of the Srd "Udica" Mali Lošinj account number: HR872402006-1100133274**

### **3. CHAMPIONSHIP**

The 31st CMAS Euro - African Spear Fishing Championship will take place in two consecutive days of competition of five (5) hours each one, in the waters of the island of Lošinj. This geographic area will be divided in three (3) areas named "Competition areas", two (2) primary areas where competition will take place, and one (1) reserve area in case the weather conditions make it unsafe for people and boats to operate in the primary areas. These areas will be named Zone A, Zone B and Reserve zone.

The CMAS Technical Delegate will confirm the order of the competition areas no later than one hour before the start of the first competition day.

The CMAS Technical Delegate could, if he considered it necessary, reduce the time of the competition day compared to the initially scheduled time, during the competition day or at the start of the competition day, for safety reasons for the competitors, the boat support persons and the boats, if weather conditions are severe.

Competition in one day will be valid if its time passed exceeds the two thirds of the scheduled time for the competition in the day.

The championship will be valid when at least one valid competition day is completed.

The total suspension of a competition day is strictly a decision of CMAS technical delegate.

Competitors can only use the boat provided by the Organization Committee or own boats accepted on registration that will be considered as the official boats. Another means of transportation is forbidden during the time of competition.

Each national team will be provided with a set of three (3) official boats. Taking in account that boats could be of diverse size and power, in this event:

- Boats available, excluding competitors with own boat accepted by organizer, will be distributed in packs of three boats in an equitable and fair manner, and
- The boat packs will be allocated by draw.
- It is the responsibility of the captain of each team to distribute the boats to every one of their athletes.

Team captains will be allowed to be in one of the three boats assigned to own athletes, and they will be free to switch from one boat to another during the day of competition.

- The boatmen act as commissioners.
- In case of breakdown, the boat will be replaced if possible. Complaints about the



substitute boat will not be accepted.

- National Teams, which bring their own boats, must attach a written notice when registering. It will be authorized boats with **150 maximum HP**. Commissioners will be assigned to these boats by the organization.
- The CMAS Technical Delegate will select the commissioners for the Croatian participants among other nations available commissioners.
- Each official boat will be assigned a reference number the same as the Competitor. It will be a reference number when using the radio signal transmitter during the competition. Competitors are not allowed to change their boat.

The official visit period without fishing and taking guns in the water are two weeks = 15 days before the championship starts: since 30<sup>th</sup> August 2017 to 13<sup>th</sup> September 2017, both included).

It is forbidden:

- To access the competition areas the day before the beginning of competition to all the competitors, members of delegation, commissaries, captains and other persons related to said persons.
- To visit any competition area during official visit period using scuba diving apparel other than apnea, or using scooters or any underwater mean of propulsion.

#### **WARNING!!**

**During the training days police or other competent authorities might inspect the boats.**

**Organization strongly recommends to comply with the Croatian Fishing Law.**

**Breaking the law will lead to expulsion from the competition as well as the fishing apparel confiscation and an administrative and financial punishment.**

**During the competition the Commissioners are responsible for participants to comply with the Law.**

#### **4. ALLOWED APPAREL:**

The use of an official buoy provided by the organizer committee will be obligatory for all competitors being in the sea during the time of the competition days.

In the event of losing the official buoy, the boat commissaries will request the organization for a spare official buoy, during that time the athlete must use another own buoy of similar dimensions.

**Only the use of following equipment is allowed:**

1. One boat for each competitor.
2. Spear guns, loaded by the athlete without help of other competitor or support of people on boat.
3. Diving fins



4. Mask.
5. Snorkel
6. Fast release weights belt.
7. Extra ballast weight that is always retrieved from sea bottom
8. Gloves.
9. Buoy fish holder
10. Spare arrows and hooks.
11. Underwater watch and computer
12. Lamp
13. Echo sounder.
14. Isothermal wetsuit
15. Diving knife.
16. It is recommended to have an ice box to keep the catches fresh.
17. Communication means (mobile phones, VHF transceivers, walky talkies,...)
18. Global Position System (GPS).
19. Portable scale.

**It is forbidden:**

- Carrying fish in the belt or any other place than the buoy or the boat.
- To be dragged by boat in the water against the current.
- Loaded spear gun on board.
- Loaded spear gun hung on buoys
- **USE OF COMPRESSED AIR FOR BREATHING FROM ANY KIND OF DEVICE OR CONTAINER.**

**COMPULSORY EQUIPMENTS:**

Use of following safety articles is required by local Sea Authority:

- Homologate safety float (buoy)

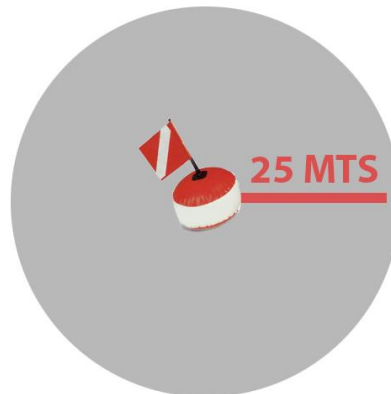




## 5. METHODS OF CONTROL

Each competitor will be provided with a numbered official buoy at the moment of the inscription, the use of that buoy is **COMPULSORY** during the days of the competition, athletes must not go further than 25 meters from their official buoy.

### **Zona circular de seguridad** **Secure Zone**



The organizer committee will give numbered wire to every competitor to keep the fish of the catch, that will be sealed by the commissaries and delivered at the designated place for the collection of the catches at the end of each competition day, or at the time when an athlete decides to abandon the competition, in this event it is compulsory that he communicates this intention to the CMAS Technical Delegate or the Director of competition before leaving the competition area.

Every boat with a competitor will be identified by a number and the correspondent initials of the country, with the number of the athlete and the flag of the country, according to CMAS General Rules for Championships.

## 6. THE COMPETITION

The Director of Competition will lead the journey of boats and competitors to the gathering point determined during the technical meeting of captains, in the middle of the zone of competition. The boat of the Director of Competition will leave the port of departure, followed by the boats of the athletes until arriving at the gathering point where he will indicate the start of the competition with visual and sound signals.

All boats must follow the Competition Director boat to and from the competition area. Once all boats have arrived at the gathering point, there will be a new recount of the participants and the time for the start and the finish of the fishing event will be communicated. The gathering point and the margins of time to arrive to the gathering point and pass the control once the fishing time has expired will also be communicated at that moment.



At the end of the competition the Director of Competition will signal the end in the same mode, both sound and visual signals. Boats of competitors must arrive to the precise gathering check point 15 minutes after the end of the competition time. The CMAS Technical Delegate can set a different margin if sea conditions require it.

**PENALIZATION FOR THE DELAY ON THE MARGINS OF TIME**

<b>Up to 5 minutes</b>	<b>2.000 points</b>
<b>Every additional minute or fraction</b>	<b>500 points</b>
<b>Over 15</b>	<b>Disqualification</b>

The movement of the boats during the competition all the zone long must be keeping prudent distances with the other athletes and their buoys and at slow speed and respecting the distance in the radius of 25 meters of the buoy signaling one athlete.

## **7. COMMISSARIES AND JUDGES**

All not identified situations in the present rules must be solved according to the international Spear fishing rules of CMAS.

For events not identified in the Particular or the General Rules, a decision will be taken and resolved by the International Jury/CMAS Technical Delegate for the championship.

- The competition Committee may be consulted by the CMAS Technical Delegate for expert advice at any moment, but the CMAS Technical Delegate will take his own decisions.
- Commissaries of boats must fulfill the legal requirements and follow the orders of the CMAS Technical Delegate.

In the event of a competitor becoming tired or other circumstances obliging the athlete to retire from the competition, he can only leave the competition after notifying the commissary in own boat and the latter has to communicate that to the CMAS Technical Delegate or the Director of competition.

During the competition, the official Main Boat will have flags in colors that mean:

RED: Emergence/Urgency

WHITE: End of competition.

GREEN: Request for mechanical help.

After White flag and sound signal, all competitors must stop his fishing activity and go on board the boat. If he has to stay in water, he will stop the fishing activity and remove his mask of his face.



## 8. SCORING AND CLASSIFICATION

The calculation will be in two steps:

### PHASE 1: Traditional Points (P.T.)

The amount of points obtained by the captures in groups, calculated as follows: one point per gram of each valid catch plus the established bonuses.

The max valid weight for the scoring of the catches of any group will be 12,50 Kg. (12.500 g)

Catches which weigh more than 12.500 g. will score this maximum value plus the bonus, although total real weight will be considered in the event of the existence of an award for the Biggest Catch.

### BONUSES:

- Each valid catch will have a 500 points bonus.
- Each different species will have a 1.000 points bonus.
- Additional bonus of 1.000 points when the full quote of catches of a certain species from group 2 is completed, kirnja – dusky grouper (*Epinephelus marginatus*), Kirnja zlatica, galinjača – goldblotch grouper (*epinephelus costae*) and kirnja bijelica, bijela kirnja – white grouper (*epinephelus aeneus*) excluded. There is also 1.000 bonus points for completing the catches from group 1. and group 3

### PHASE 2: Percent Punctuation (P.P. %)

The total punctuation of each athlete on each day will be a percentage taking as reference the punctuation of the competitor with the highest score in that day of the competition.

The athlete who obtains the best punctuation will be credited with the 100% and the points of the rest of the competitors will be calculated as a pro rata percentage of that punctuation. The percent values will be rounded up to the third decimal.

### Formula for calculation of the individual points:

$$\frac{\text{Punctuation of each athlete} \times 100}{\text{Punctuation of the first classified of the day.}}$$

The classification will be calculated in points, following the precedent rules.

The catch of any athlete who presents his catches in a bag other than the official one provided by the organization, with or without water will immediately be removed from bag and water and be weighted last

### PENALTIES:

- Any catch not reaching two thirds of the minimum weight of their category, will generate a penalty (negative points), equal to the minimum weight of the category/group.



- In the event of one fish exceeding the established limit of pieces of the particular species, it will be ignored in weighing and the two heavier catches of the species will be removed.
- In the event of the established limit of pieces in **Group 1 and 2** having been exceeded, the penalty will be **disqualification from the championship**.
- If a competitor exceeds by two or more catches the max number of catches of a species, all the catches of the species will be disqualified for this day of competition
- Any catch that is not in the boat at the time of finish the journey of competition is not considered a valid piece.

## 9. VALID, NON VALID AND BANNED SPECIES

### BANNED SPECIES

Athletes are not allowed to fish any banned species by the Croatian National Legislation or local law, as:

- **Drozd - Green wrass ( *Labrus viridis* )**
- **Tuna – bluefin tuna ( *Thunnus Thynnus* )**
- **Iglun – swordfish ( *xiphias gladius* )**
- **Iglan – Mediterranean spearfish ( *tetrapturus belone* )**

The capture of these fish is allotted without any point:

- Drhtulja - Marbled electric ray ( *torpedo mormorata risso* )
- Golub - Sting ray, Eagle ray- all kinds of *dasyatis pastinaca*
- Raža - all kind of Rajidae
- Morski pas - all kind of Sharks ( *selacea* ) except Catshark ( *Scyliorhinus Stellariss* )

### VALID SPECIES

Three (3) groups are established according to specific min. weight and max. number of catches allowed in these Particular Rules. To be considered valid species it will be any kind of fish, caught alive and in freedom, that are included on the Groups 1-2-3 below. If they are not, they are NON VALID species.

Pictures of all allowed species are published in the official website of the Championship

[www.\\_\\_\\_\\_.hr](http://www.____.hr)

The highest weight that provides points will be 12,50 kg for each piece. Total weight will be counted for the “heaviest piece” award.



### **GROUP 1**

In this group are: **The European conger (Conger conger)** , **Monkfish (Lophius)** , **Murine (Muraenidae)** and **Catshark (Scyliorhinus Stellariss)**.

Minimum weight is 3000 grams for **European Conger** and limited quantity is 5 (five).

Minimum weight is 2000 grams for **Monkfish, Murine** and **Catshark** and limited quantity is 2 (two) per each species.

Each catch over the minimum weight is allotted 1.500 (1000+500) points, regardless of weight.

### **GROUP 2**

Is one point per gram for each valid catch. The maximum weight taken into account is 12,50 kg.

The minimum weight by species is detailed in the table:

<b>Species</b>	<b>Quantity</b>	<b>Minimum weight</b>	<b>Bonus</b>
Kirnja – dusky grouper ( Epinephelus marginatus)	1	5.000 minimum is 45 cm	500
Kirnja zlatica, galinjača – goldblotch grouper (epinephelus costae)	1	2.000	500
Kirnja bijelica, bijela kirnja – white grouper (epinephelus aeneus)	1	2.000	500
Gof - Amber jack ( Seriola dumerili)	10	2.000	500
Lica – Leerfish (lichia amia)	10	2.000	500
Palamida - Atlantic bonito ( Sarda sarda)	10	1.000	500
Trupac, rumbac – bullet tuna (auxis rochei rochei)	10	1.000	500
Luc – little tunny (euthynnus alletteratus)	10	1.000	500



### **GROUP 3**

In this group, the minimum weight of 500 grams by species, is detailed in the table below and it is allowed to catch 10 (ten) of each.

<b>Species</b>	<b>Quantity</b>	<b>Minimum weight</b>	<b>Bonus</b>
Zubatac – dentex ( <i>Dentex dentex</i> )	10	500	500
Tabinja mrkulja – forkbeard ( <i>Phycis Phycis</i> )	10	500	500
Iglica – Hornfish ( <i>Belone Belone</i> )	10	500	500
Kovač, šampjer – john dory ( <i>zeus faber</i> )	10	500	500
Škrpun – black scorpionfish ( <i>scorpena porcus</i> )	10	500	500
Škrpina – red scorpionfish ( <i>scorpena scrofa</i> )	10	500	500
Brancin, lubin – european seabas ( <i>dicentrarchus labrax</i> )	10	500 Minimum is 25 cm	500
Strijelka – bluefish ( <i>pomatomus saltatrix</i> )	10	500	500
Lampuga – Mahi mahi ( <i>coryphaena hippurus</i> )	10	500	500
Pic – sheephead bream ( <i>diplodus puntazzo</i> )	10	500 Minimum is 18 cm	500
Šarag – White seabream ( <i>diplodus saragus saragus</i> )	10	500 Minimum is 18 cm	500
Fratar – twoband bream ( <i>diplodus vulgaris</i> )	10	500 Minimum is 18 cm	500
Ovčica – sand steenbras ( <i>lithognathus mormyrus</i> )	10	500 Minimum is 20 cm	500
Pagar – red porgy ( <i>pagrus pagrus</i> )	10	500 Minimum is 18 cm	500
Salpa – goldline ( <i>sarpa salpa</i> )	10	500	500
Komarča, orada – silver seabream ( <i>sparus aurata</i> )	10	500 Minimum is 20 cm	500
Kantar – black bream ( <i>spondyliosoma cantharus</i> )	10	500	500
Kavala, konj – brown meagre ( <i>sciaena umbra</i> )	10	500	500
Trlja kamenjarka – red mullet ( <i>mullus surmulerus</i> )	10	500 Minimum is 11 cm	500
Cipal – all kind of mullet ( <i>chelon labrosus, liza aurata, liza ramada</i> )	10	500	500
Vrana – brown wrasse ( <i>labrus merula</i> )	10	500	500
Smokva – cuckoo wrasse ( <i>labrus mixtus</i> )	10	500	500
Lumbrak – raingow wrasse ( <i>symphodus tinca</i> )	10	500	500
Pauk, ranj – all kind of weever ( <i>trachinus</i> )	10	500	500
Bežmek – atlantic stargazer ( <i>unanoscopus scaber</i> )	10	500	500
Škaram - european barracuda ( <i>sphyaena sphyaena</i> )	10	500	500
Kostorog – pig-faced ( <i>balistes capriscus</i> )	10	500	500
Papigača-parrotfish ( <i>linnaeus</i> )	10	500	500



The number of catch authorized for each species will have to be respected. If the number of competitors' fish is higher than that authorized ( 1 piece ), the surplus will be removed (always the 2 heaviest) and the competitor will be penalized with the equivalent of the bonus per piece.

Each valid piece will have a bonus of 500 points according to the table. Each piece that does not reach 2/3 of the minimum weight for its category will generate a penalty, according to the minimum weight in the equivalent of the bonus of the capture of this species.

The individual score will be equal to the sum of the weight of the valid species plus bonus by catches, less penalties.

## **FINAL CLASIFICATION**

**Individual classification:** It will be equal to the total sum / addition of the total points in percent of the two (2) competition days. In the event of draw, the athlete with higher number of catches will win. If the number of catches is equal, the athlete with the biggest catch will win.

**Classification by Nation:** It will be the result of the addition of individual points in percent scored by every member of same nation during the valid days of competition.

## **10.REGULATORY FRAMEWORK AND SANCTIONS**

During the XXXI Euro - African championship, the national teams and their members must follow these Particular Rules and the CMAS Spear Fishing General Rules. In particular:

The competitors of the national teams must know and respect Spearfishing CMAS rules, as well as these Particular Rules and local Croatian laws.

The CMAS Technical delegate, Director of Competition and commissaries, will be in charge to enforce respect of the rules. After the boat commissaries' or the competition director's communication to CMAS Technical Delegate of any wrongful behavior, the CMAS Technical delegate will decide a WARNING or a DISQUALIFICATION (for the day OR the whole championship).

### **Discipline.**

#### **Behaviors punishable with a WARNING:**

- To arrive late at the control points planned by the Organization.
- For incorrect behaviour towards other competitors or the Judges.
- To move away more than 25 meters from his official buoy.
- To load or to maintain his spear gun in load position on ground or on the support boat.
- To have a means of signal indication not in conformity with the Rules.



- To not declare to have caught the total number allowed for a certain species of fish, as stated in the Particular Rules.
- During the time of competition, go out of the limits of the competition zone up to a distance where this could be considered as accidental and not intentional.
- To have obtained help to recover the buoy or the mobile ballast.
- Any athlete that presents his captures in a bag with or without water, different than the one provided by the organization, it's fishes should be weighted at the end of the weighing performance after removing the bag and the water

#### **Behaviors punishable with DISQUALIFICATION FOR THE DAY**

- Two warnings of CMAS Technical Delegate for any reason / behaviour in the same day, must be immediate disqualification in the day.
- Carrying fish in the belt or keeping catches at any place out of boat or official buoy.
- To return after the finish time for the end of the competition without major force justification: time to return to be established according to length of zone and sea conditions.
- During the time of competition, go out of the limits of the competition zone beyond a distance where this is considered as intentional.
- The athlete that presents a higher number of catches with penalty than valid catches weighed.
- Leave the competition zone before end of day of competition or without passing check control of arrival, without getting permission of CMAS Technical Delegate or Director of Championship, through Boat Commissar demand.
- To stay in sea after the official time of day of competition, even not accepting the signals of end of time from Boat Commissar.
- To be dragged by boat in the water against the current.
- Any athlete that presents his captures on wire, different than the one provided by the organization.

#### **Behaviors punishable with TOTAL DISQUALIFICATION (Deleted from official classification):**

- Aggression towards other Competitors, the Judges or the Members of the Organization.
- To fish species prohibited by the Croatian national legislation.
- Replacement of the catches of the regulated species or exchanged between athletes.
- Return or leave in water catches of any kind / category: not valid, forbidden or valid species of any weight.
- To be in the Competition Zone, with or without speargun, before the Official start time in the dates of competition or precedent day.
- To use any type of scuba diving or breathing apparatus.
- Infringement of any fishing local law





- Collaboration (other than communication between the boats of the same team) among participants except for security reasons.
- Weighing fraud.
- During official time of competition as well as along the official period of zone visit before championship is totally forbidden, under punishment of disqualification in championship:
- **Use of exploding puntas, luparas, and / or any gadget with explosive power.**
- **Use of spearguns of explosive gas or any system which is not charged by human physical effort.**
- **Use any diving breathing system. This is spear fishing in apnea only.**
- **Use of submarine propeller gadgets as "torpedo".**
- All those who committed offences before the beginning of the competition will not be allowed to take part in the competition.

## COMPLAINTS

- Participants have the right to make a complaint to the Jury.
- Only the team's Captain can make the complaint.
- All complaints must be accompanied by a € 100 deposit, fixed by CMAS.
- A complaint must be presented in writing to the CMAS International Judge (using English, French or Spanish) during the following periods:
  - 1) Before the weighing time
  - 2) During the weighing
  - 3) Regarding a classification error, the complaint must be notified to the Competition Director (with the 100€ deposit) within 15 minutes following the Classification publication in order to postpone the award ceremony.
  - 4) It will be a fixed period of an hour for writing and presenting the complaint form to the International Judge, once the oral complaint intention was communicated. Otherwise the complaint will be null and void, and the money on deposit will not be refunded.
- The complaint will be valid in case the requirements are met.
- The 100€ deposit will be refunded if the complaint is accepted.

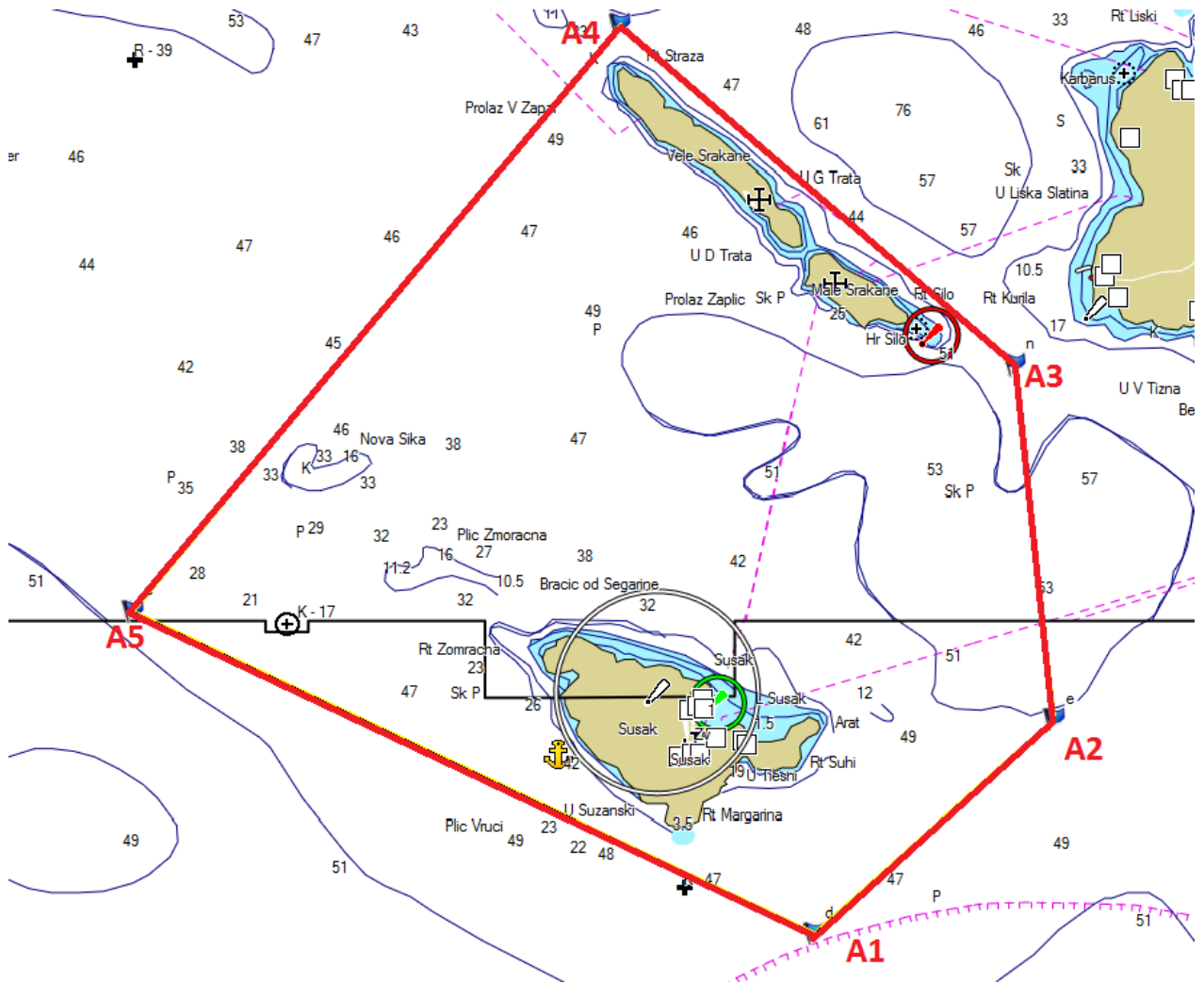
## 11.COMPETITION AND RESERVE ZONES

The XXXI Euro - African Spear fishing championship will take place in the days 13, 14, 15, 16 and 17<sup>th</sup> of September, 2017.

The championship will take place in the waters of island Lošinj. The event will take place in two different zones.



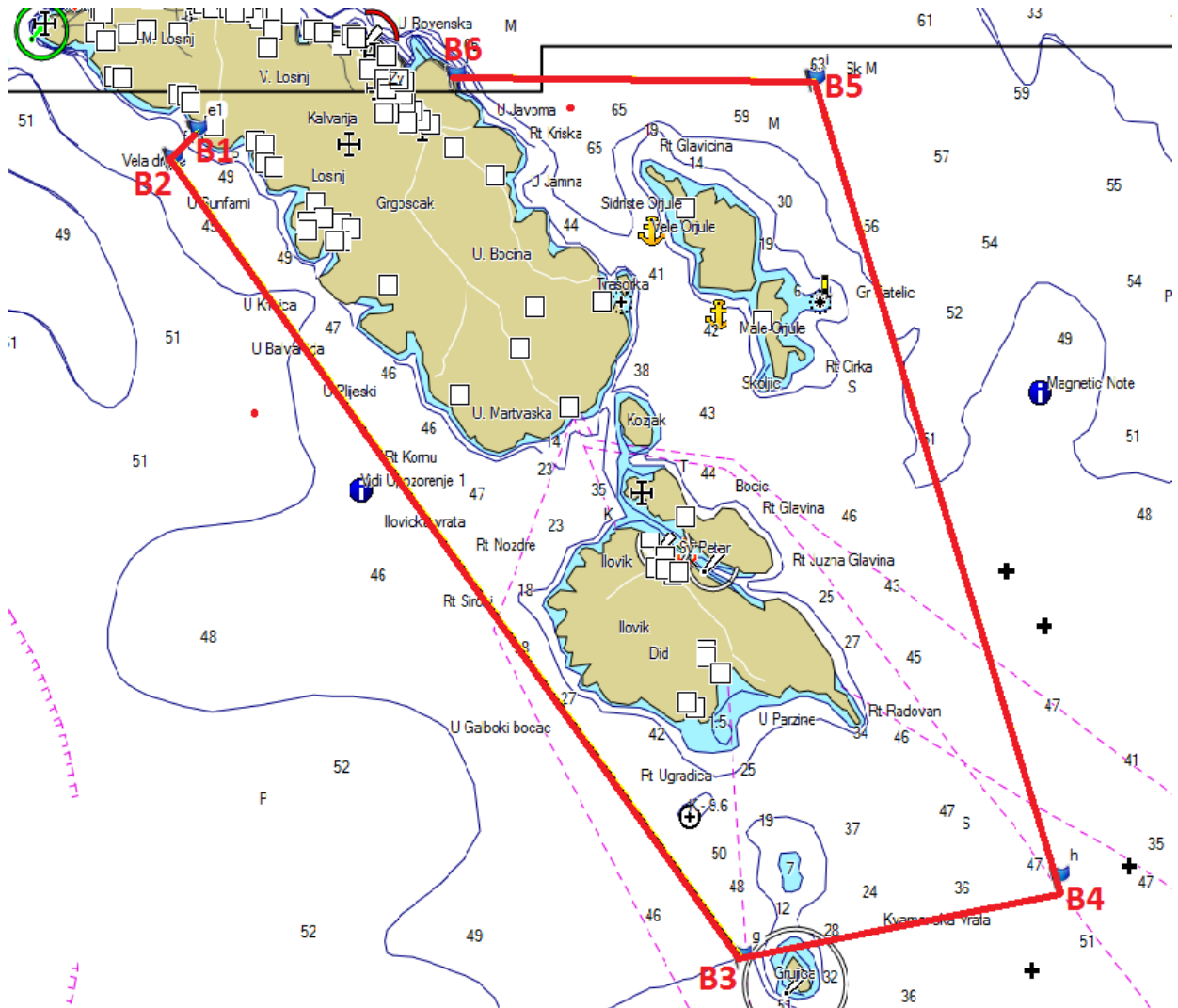
## ZONE A:



### COORDINATES – ZONE A Forbidden is port of harbour SUSAK

<b>A1</b> - 44° 29.055' N 14° 19.560' E	<b>A2</b> - 44° 30.654' N 14° 20.755' E
<b>A3</b> - 44° 33.303' N 14° 21.395' E	<b>A4</b> - 44° 35.847' N 14° 17.780' E
<b>A5</b> - 44° 31.463' N 14° 13.322' E	

**ZONE B:**

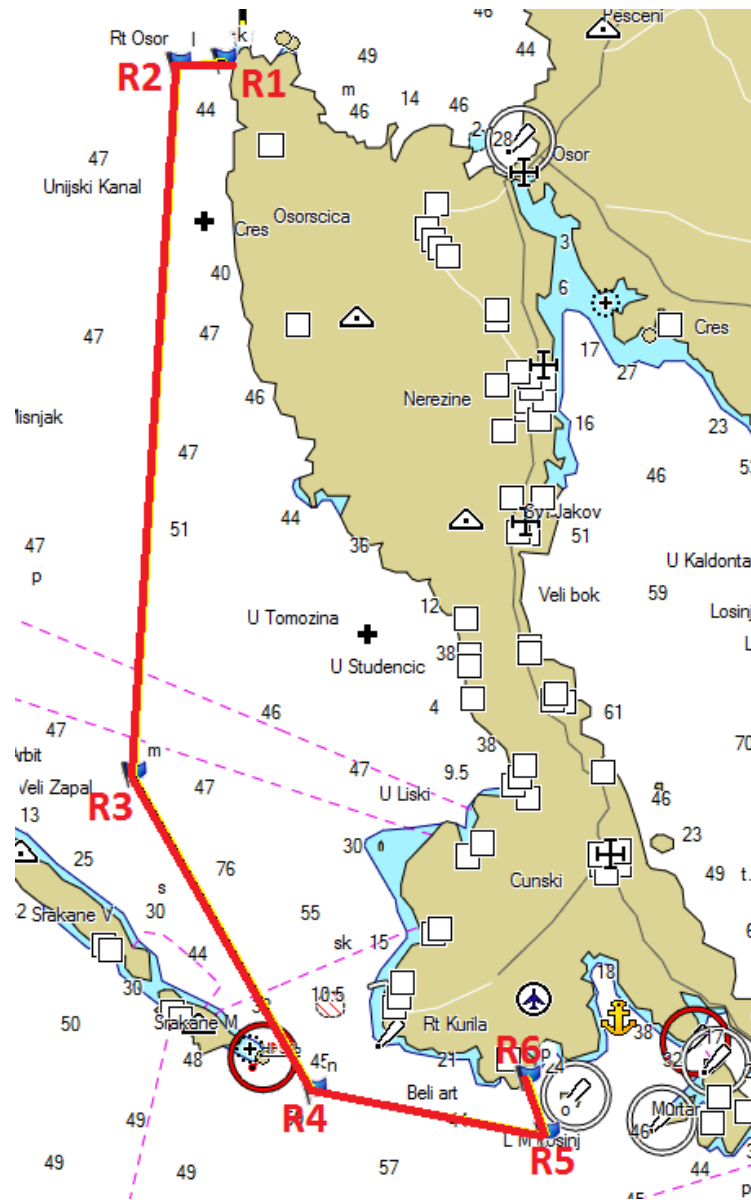


**COORDINATES – ZONE B**

Forbidden is chanal between island ILOVIK and island ST. PETAR

<b>B1</b> - 44° 30.761' N 14° 28.401' E	<b>B2</b> - 44° 30.560' N 14° 28.165' E
<b>B3</b> - 44° 24.757' N 14° 33.647' E	<b>B4</b> - 44° 25.337' N 14° 36.703' E
<b>B5</b> - 44° 31.130' N 14° 34.348' E	<b>B6</b> - 44° 31.160' N 14° 30.888' E

**RESERVE ZONE:**



**COORDINATES – RESERVE ZONE**

<b>R1</b> - 44° 42.748' N 14° 20.382' E	<b>R2</b> - 44° 42.714' N 14° 19.877' E
<b>R3</b> - 44° 36.203' N 14° 19.372' E	<b>R4</b> - 44° 33.303' N 14° 21.395' E
<b>R5</b> - 44° 32.904' N 14° 24.005' E	<b>R6</b> - 44° 33.419' N 14° 23.790' E



## **12. ANTI-DOPING CONTROL**

During the competition, anti-doping control may take place, according to the rules of the CMAS and the WADA.

## **13. RULES AND INTERPRETATION**

The CMAS general rules for Spear Fishing championships will be used as the norm for any issue not regulated in this Particular Rules.

## **14. RESPONSIBILITIES**

The Underwater Activities Worldwide Confederation CMAS, HSSRM, the Srd "Udica" Mali Lošinj, the Competition Authorities and the organizer committee will not be accountable of eventual accidents, personal or material losses affecting to competitors or third persons that happens before, during and at the end of the championship.

Competitors are going to accept all rules and norms detailed in this Particular Rules by signature at the moment of the final inscription, as well as any additional instruction coming from organization committee or CMAS Technical Delegate.

## **15. ACTIVITIES**

Between 13<sup>th</sup> and 17<sup>th</sup> September, 2017 – Mali Lošinj - Croatia

### **WEDNESDAY, 13<sup>th</sup> of SEPTEMBER**

12:00 AM /12.00 h. = 18:00 PM / 18.00 h. arrival to the **Lošinj Hotels & Villas Wellness Hotel Aurora \*\*\*\***

20:00 PM Dinner

### **THURSDAY 14<sup>th</sup> of SEPTEMBER**

08:00 AM / 08.00 h. Breakfast

10:00 AM / 10.00 h. Captains technical meeting, boats drawing and commissaries inscription.

12:00 AM /12.00 h. Commissaires meeting

18:00 PM/ 18:00 h. Opening parade in center of the city of Mali Lošinj



### **FRIDAY 15<sup>th</sup> of SEPTEMBER- First day of competition**

07:00 AM / 07.00 h. Breakfast  
08:15 AM / 08:15 h. Transfer from hotel  
09:00 AM / 09:00 h. Leaving to the fishing area  
10:00 AM /10:00 h. Competition Start, First day of competition.  
15:00 PM /15:00 h. End of the first day of competition.  
15:45PM /15: 45 h. Catch delivery in center of the city of Mali Lošinj  
17:30 PM / 17:30h. weighting process start at center of the city of Mali Lošinj  
21:00 PM / 21:00 h. Dinner at the hotel

### **SATURDAY 16<sup>th</sup> of SEPTEMBER – Second day of competition**

07:00 AM / 07.00 h. Breakfast  
08:15 AM / 08:15 h. Transfer from hotel  
09:00 AM / 09:00 h. Leaving to the fishing area  
10:00 AM /10:00 h. Competition Start, First day of competition.  
15:00 PM /15:00 h. End of the first day of competition.  
15:45PM /15: 45 h. Catch delivery in center of the city of Mali Lošinj  
17:30 PM / 17:30h. weighting process start at center of the city of Mali Lošinj, Medals official Award.  
21:00 PM / 21:00 h. Closure dinner at the hotel

### **SUNDAY 17<sup>th</sup> of SEPTEMBER**

08:00 AM / 08.00 h. Breakfast  
11:00 AM / 11.00h. Leaving back home.

**NOTE-** Timetables can be modified due to necessities.

## **16. ORGANIZATION CONTACT DATA**

Our federation is honored to clarify all your doubts, we are at your service.

e-mail: [cfosa@ri.htnet.hr](mailto:cfosa@ri.htnet.hr)

General Manager for the event: **mr. Dragan Jambrošić, President of Srd "Udica" Mali Lošinj**

**Telephone number: +385 98 536 488**

**E-mail: [srd.udica.ml@gmail.com](mailto:srd.udica.ml@gmail.com)**