

XXVIII Championship Euro-African of Underwater Fishing

Peniche 2011



PARTICULAR REGULATION

ORGANIZATION AND CONTROL

- The World Underwater Federation delegated in the Portuguese Federation of Underwater Activities - FPAS. The organization of the XXVIII Euro-African championship of underwater spear fishing, which will take place between September 15 and September 18, 2011, in the marine zone of Peniche - Portugal.
- In the end of this Championship, the title of World-wide Champion of Spear Fishing, will be attributed as assigned by CMAS, and the teams title, as well as the largest catch by the organization.
- The International Jury is composed by the Head of the Judges (Judge CMAS), nominated by the CMAS Executive Board: **Mr. Sergio Perez**
- * The Competition Committee has the function of providing support the CMAS Judge under request, and it is formed by:
 - 1 Director of Competition, nominated by the Federation organizer: **Mr. João Gomes Pedro.**
 - 3 Members from Captain teams, elected during the Technical Meeting as advisers.
 - 2 Members substitutes from Captain teams, elected during the Technical Meeting.
- The technical control will be made by:
 - The President of the International Jury: **Mr. Sergio Perez**
 - The Director of the Competition: **Mr. João Gomes Pedro**
 - The coordinator of the Services of Prevention and Security: **Dr. Fernando Aldomiro.**
- Services of Assistance in Peniche: Hospital of Peniche, Voluntary Firemen of Peniche, ISN, IPTM- porto de Peniche, Navy - coast guard, Municipality of Peniche, and sailing club of Peniche.

REGISTRATIONS

- The registrations will have to be sent by e-mail: fpas@fpas.pt
or for post office:

Federação Portuguesa de Actividades Subaquáticas
RUA DO ALTO LAGOAL, Nº 21A
2760 - 003 CAXIAS
OEIRAS – PORTUGAL

- Each National Federation in due registration with Sports Committee of the CMAS will be able to inscribe its Equip national, composed by: 3 competitors, 1 reserve, 1 captain and 1 doctor.
- The representatives of the teams must have the minimum age of 18 years and to possess the nationality of the country that represents.
- The accommodations will take place in: Vilas do Lago in Atlantic Golf Hotel - <http://www.atlanticogolfhotel.com/>
- The cost of participation of each nation is defined in accordance with the modalities established in the table below:

Nº of elements of national team	With lodging			Without lodging		
	Value of total registration	1 st Payment up to 18-07- 2011	2 ^o Payment up to 18-08-2011	Value of total registration	1 st Payment up to 18-07-2011	2 ^o Payment up to 18-08-2011
6	3.700,00 €	1.850,00 €	1.850,00 €	3.400,00 €	1.750,00 €	1.750,00 €
5	3.400,00 €	1.700,00 €	1.700,00 €	3.150,00 €	1.525,00 €	1.525,00 €
4	3.100,00 €	1.550,00 €	1.550,00 €	2.900,00 €	1.450,00 €	1.450,00 €
3	2.700,00 €	1.350,00 €	1.350,00 €	2.650,00 €	1.325,00 €	1.325,00 €
2	2.500,00 €	1.250,00 €	1.250,00 €	2.400,00 €	1.200,00 €	1.200,00 €

Note 1: The organization invites and recommends the national teams to bring their own boats if possible, resulting in a discount on the inscription value of 200€ per boat for both days of competition.

Note 2: To nations that do not meet the deadlines for registration, the organization does not guarantee the provision of boats for every athlete. Getting this logistics is there for responsibility of the national team and subsequent accreditation by the organization is mandatory.

Note 3: The Organization will take responsibility exclusively to the representatives of the enrolled nations (3 competitors, one reserve, 1 captain and 1 Doctor), from 14h00 of 15 of September of 2011 until ace 11h00 of 19 of September of 2011. The Organization will not assume any incumbency with the companions of the enrolled nations and declines all the responsibility that are of lodging, security, covering for insurance, etc. However a discount is available if this service is required with the inscription and reserve of accommodations of the national team.

- The inscription form of each participant nation must contain the name and date of birth of each element of the team. The inscription form must have 2 photos of each element, perfectly identified or in alternative a digital photo.

- It is only considered a valid inscription the ones that fulfils with the following formalities:

1. Reception of the inscription form of the participant nation followed by the first payment, correspondent to 50% of the value foreseen in the table above, function of the chosen option, **before 15 of July of 2011**.

2. Reception of the inscription form of the competitors and attached documentation, followed by the payment, correspondent to the remaining 50% of the value foreseen in the table above, function of the chosen option, **before 12 of August of 2011**.

3. To make the payment of the CMAS Registration, until the **16 of July of 2011**. This payment is made directly to the headquarters of the CMAS, followed of the "Form of Registration in a Championship CMAS" (Annex 6)

4. Presentation of the "Sportive License of the CMAS" for national competitors, inside of the stated period of validity.

PRESENTATION

- The competitors must present themselves until 18h00 of 15 of September of 2011, in the recreation port of Peniche, Portugal, to confirm its definitive registration. At this moment they will receive the complementary documents and instructions

COMPETITION

- The championship will occur in two consecutive days, of 5 hours each, on a described maritime area in the annexes "North Zone", "South Zone" and "Reserve Zone". There will be two zones of competition and a reserve zone.

- The order of choice of the competition zones will be determined in the eve of each day, in function of the sea conditions.
- If during the competition the meteorological conditions are degrading or for majeure force the organization to consider necessary to reduce the prescribed time, for security reasons, the championship will be valid if had at least a duration of 2/3 of the time foreseen for day, as occurred, that is 3 hours and 20 minutes. The total suspension of a competition day is of the strict responsibility of the International Jury. During the continuation of a competition day, the partial suspension is of the ability of the Director of Competition and Judge CMAS
- The competitors will have to use the official transport (boats), whether provided by the Organization, whether provided by the national teams themselves, ensuring that their boats are previously accredited by the organization. The organization bans the use of any other means of transport. The FPAS will seek to ensure the allocation of a boat to athletes who do not possess one, and eventually to the team captains. The boats availability and their distinguishing characteristics may determine the need for groups of similar boats for the participants. Boats will be allocated to teams by lottery to be held during the Meeting of Delegates. Each captain has a responsibility to make the distribution of boats allocated by competitors.
- The competition zones cannot be visited in the eve of the championship, that is, in September 16. During the period of recognition, the visit to the competition zones will be made by ways of transport of the national team's responsibility.
- Two weeks (14 days) before the competition it is strict forbidden to fish in the competition zones, witch will result in exclusion. The same applies to the use of scuba diving equipment and the underwater, to the members of the participant teams or to its assistants and companions.

EQUIPMENT FOR SPEAR FISHING

Only the use of the following equipment is allowed:

- One or more spear guns of rubber bands or pneumatic, set in motion solely for muscular force of the competitor and without external help.
- Fins, masks, gloves, flashlights, breather tubes, ballast belts, harpoons and hooks, knives, suits, deep gauge, compass and GPS.
- Each competitor will be able to use its own buoy, but he is mandatory to keep the official buoy with its number in the water.

It is forbidden:

- Transport fish in any place, witch is not the buoy or the boat.
- To load or to have a loaded rifle out of the water.
- To have a loaded rifle in the buoy.

MEANS OF CONTROL

- The organization will supply to each competitor official buoy at the moment of the definitive registration, at September 15 of 2011. The use of the official buoy is mandatory. For no reason the competitor, can leave behind the use of the official buoy or move away more then 25 meters.
- The organization will supply to each competitor the bags to keep the captures.

COMPETITION

- The orders of beginning and end of competition will be given by the Director of the Competition.

- It is forbidden to the competitors to move of boat. In the case of it damages, Commissioner-Boatman will give knowledge of the situation to the Director of the Competition, which, fastest possible, will make to repair or to substitute the boat. However, the competitor will be able to continue to fish, without moving away more than 25 meters from the official buoy.
- Any protest on the substituted boat, will not be accepted.
- Commissioner-Boatman, when manoeuvring the boats, must prevent to disturb other competitors and remain away from these and ask, if necessary, to other Commissioner-Boatman, which is the localization of its competitor, to prevent any accident or disturbance.
 - The function of Commissioner-Boatman is to lead the boat and at the same time, to watch for the fulfilment of the rules. These must supply to the competitor, when this is in the water, the equipment that will be requested that will be on the boat, also has to keep the captures in the respective bag, and if the competitor to ask for, can accept to remove the capture of the harpoon if it's not considered dangerous.
 - Commissioner-Boatman cannot make rifle loading.
 - All captures seen at the surface, must be brought the boat, and will be registered by the Commissioner-Boatman, if not, a penalty will.
 - Commissioner-Boatman cannot recover from the deep, weapons, belts of ballast or any another equipment part of the competitor, as well as harpooned captures.
 - It is forbidden to make circles with the boats, with the engine working to provoke the entrance of the fish in holes, as well as disturbing intentionally the fishing zone of other competitors.
 - If by fatigue, sickness or any another cause, the competitor want to abandon the competition, he must go direct to its boat and ask for Commissioner-Boatman to get the Director of the Competition authorization to leave. The captures made until this moment will be valid for scoring.
 - On board the boats of the Organization and during the competition the following signals will be used:
 - Red flag: order of assistance, emergency.
 - Flag of truce and sonorous signal: End of the competition.
 - Only accredited boats by the organization can move in the competition zone.
 - When sound signal of competition end is herd, the competitors will have to stop to fish and immediately go to its boat. Any capture that is not the surface in the moment of competition end, is not considered valid, and cannot be present to the weighting.

POINT CALCULATIONS AND VALID CATCHES.

1- The point calculation will be made in two phases:

First phase (PC - Classic Points)

- The pointing in groups I, II and III, is made by attribution of a point per gram of each valid capture, plus the bonification and penalties. To the captures of groups I, II and III, the maximum points for the weight is of 10.000 points. However, for attribution of the trophy "the greatest catch", will be had in account the real weight of the capture, even if it exceeds the 10,000 grams.

- The bonification for valid capture is 500 points for species of groups I, II and III.
- There will be a bonus of 1000 points per each specie, with valid catches, for all groups.
- The captures of group IV only count 2,000 or 1,000 points for capture.
- There are penalties of captured units weighting less then minimum weight of capture of the respective group.
- The captures of *Ephinephelus Marginatus* known as Mero, Grouper, Chernia, Mérrou, are strictly forbidden by National Legislation.
- For the attribution of the number of points it will only be considered a valid catch, species that are listed in the following four groups:

Group I

Portuguese	Scientific designation	French	English	Spanish
Sargo	<i>Diplodus sargus</i>	Sar	White sea bream	Sargo
Sargo bicudo	<i>Diplodus puntaz</i>	Sar a mus eau pointue	Sharpen out sea bream	Sargo picudo
Safia	<i>Diplodus vulgaris</i>	Vidriade	Two banded sea bream	Mojarra
Oblada	<i>Oblada melanura</i>	Oblade	Saddled seabream	Oblada
Dourada	<i>Sparus aurata</i>	Dorade royale	Gilt-head bream	Dorada
Bica	<i>Pagellus erythrinus</i>	Pageau	Becker	Breca
Tainha	<i>Liza sp.</i>	Mulet	Mullet	Lisa
Salema	<i>Sarpa salpa</i>	Saupe	Goldline	Salema
Faneca	<i>Trisopterus minutus</i>	Tacaud	Poor-cod	Mollera
Badejo	<i>Pollachius pollachius</i>	Lieu jaune	Pollack	Abadejo
Salmonete	<i>Mullus barbatus</i>	Rouget	Red mullet	Salmonete
Ruivo	<i>Trigla lyra</i>	Grondin	Gurnard	Rubio
Baila	<i>Dicentrarchus punctatus</i>	Bar tache	Spotted sea bass	Baila
Cavala	<i>Scomber sp.</i>	Maquereau	Mackerel	Caballa
Chicharro	<i>Trachurus sp.</i>	Chinchard	Jack mackerel	Chicharro
Rascasso	<i>Scorpaena sp.</i>	Rascasse	Scorpion fish	Rascacio
Choupa	<i>Spondylisoma cantharus</i>	Dorade grise	Black sea bream	Chopra
Garoupa	<i>Serranus sp.</i>	Serran	Comber	Cabrilla
Alfaquim	<i>Zeus Faber</i>	Saint Pierre	John Dori	San Pedro
Xaputa	<i>Brama brama</i>	Grande castagnole	Ray's bream	Japuta
Besugo	<i>Pagellus sp.</i>	Pageot	Red sea bream	Besugo
Agulha	<i>Belone belone belone</i>	Orphie	Garfish	Aguja
Judia	<i>Coris julis</i>	Girelle	Rainbow wrasse	Julia

Minimum weight for valid catch: 500 grams.

Minimum weight of capture: 350 grams.

Penalty: -500 points.

Maximum number of captures authorized per day: 12 per specie.

Group II

Português	Desig. Científica	Français	Inglês	Espanhol
Bodião*	<i>Labrus sp.</i>	Vieille	Wrasse	Lábridos Pintos Maragotas
Saima	<i>Diplodus cervinus cervinus</i>	Sar tambour	Zebra sea bream	Sargo breado
Lírio	<i>Seriola sp.</i>	Liche, seriole	Amber jack	Limón
Robalo	<i>Dicentrarchus labrax</i>	Bar, loup	Sea bass	Lubina
Barracuda	<i>Sphyaena sphyraena</i>	Barracuda	Barracuda	Barracuda

Abrótea	<i>Phycis phycis</i>	Mostelle	Rockling	Lota, brotola
Pargo	<i>Pagrus sp.</i>	Pagre	Common bream	Pargo
Serrajão	<i>Sarda sarda</i>	Bonite, pélamide	Atlantic bonito	Bonito Atlántico
Romeiro	<i>Naucrates ductor</i>	Poisson pilote	Pilotfish	Pez piloto
Anchova	<i>Pomatomus saltator</i>	Tassergal	Bluefish	Anjova
Quadrado	<i>Epinephelus alexandrinus</i>	Mérou jaune	Golden grouper	Falso abadejo
Enxaréu	<i>Pseudocaranx dentex</i>	Carangue Dentue	Silver Trevally	Jurel
Veja	<i>Sparisoma cretense</i>	Perroquet	European parrotfish	Vieja

Minimum weight for valid catch: 700 grams.

Minimum weight of capture: 450 grams.

Penalty: -700 points.

Maximum number of captures authorized per day: 12 for species, except Wrasse* with maximum of 6 captures.

Group III

Português	Desig. Científica	Français	Inglês	Espanhol
Corvina	<i>Argyrosomus regius</i>	Maigre	Meagre	Corbina
Dourado	<i>Coryphaena sp.</i>	Coryphene	Dolphinfish	Dorado
Cherne	<i>Epinephelus americanus</i>	Cernier	wreckfish	Cherna

Valid minimum weight: 5,000 grams.

Minimum weight of capture: 3,500 grams.

Penalty: -5,000 points.

Maximum number of captures authorized per day: 2 for species.

Group IV

Português	Desig. Científica	Français	Inglês	Espanhol
Safio	<i>Conger conger</i>	Congre	Conger eel	Congrio
Moreia	<i>Muraena helena</i>	Murène	Moray eel	Morena
Pampo	<i>Balistes capriscus</i>	Baliste	Grey triggerfish	Baliste

Minimum weight for valid catch for Congro: 5,000 grams.

Minimum weight for valid catch for Moreia: 2,000 grams.

Minimum weight for valid catch for Pampo: 1,000 grams.

Minimum weight for catch for Congro: 3.500 grams.

Minimum weight for catch for Moreia: 1.350 grams.

Minimum weight for catch for Pampo: 700 grams.

Bonification for unit of Moreia or Safio captured: 2,000 points.

Bonification for unit of Pampo captured: 1,000 points.

Penalty for Congro: -2,000 points.

Penalty for Moreia: -2,000 points.

Penalty for Pampo: -1,000 points.

Maximum number allowed captures per day: 3 per species.

For all the groups:

- By each capture beyond the established number as maximum for that specie, the competitor will lose two catches from weighting, and the corresponding bonification. Example: If you to take 14 sargos for weighting, the 4 greatst, are removed and only 10 remain.

- The calculation of the punctuation will be gotten by the algebraic addition of the number of the weight in gram of the captures, plus the bonification and penalties.
- For weighing it will only be considered the catch by competitors of live specimens in their natural environment and in perfect freedom. It will not be counted viscera or parts of fish that are not fixed to the capture physiologically.

Second phase (PP - Percentile Points)

- The classic points (PC) of each competitor will be transformed into percentile punctuation (PP), having in account the maximum punctuation gotten by the winner of the day.
- To the competitor with more (PC) points, 100 (PP) points will be attributed. To the other competitors the percentile punctuation will be attributed (PP), rounded off to the third house decimal, in accordance with the following formula:

Formula:
$$\frac{\text{Punctuation of day} \times 100}{\text{Punctuation of the first one}}$$

2- The final classification.

- The classification will be made by PP.
- The final classification will be made by the addition of the PP of the two days.
- The final classification by team's will be made by addition of all his athletes points.

INTERPRETATION OF THE REGULATION

- By applying the new Regulation for International Competitions of spear fishing of CMAS in this championship, we call attention for some important articles:

6.4 - Behavior in the competition

- 6.4.1 All members of the registered teams are obliged to know and respect the rules of the Competition.
- 6.4.2 At all times the judges have the authority to intervene should the rules not be respected.
- 6.4.3 The judges can implement sanctions with:
- Warning
 - exclusion
- 6.4.4 Two warnings, in the same competition, can be immediate disqualification.
- 6.4.5 The Judge must inform the competitor of the infringement once it is official.
- 6.4.6 Once the action taken the Judge must inform the International Judge.
- 6.4.7 If the competitor who receives the warning has already received another warning the International Judge will order his immediate disqualification.
- 6.4.8 The The disqualified competitor loses all rights to the classification in the Competition.

6.5 - Punishable infraction with admonition

- 6.5.1 To arrive late at the control points planned by the Organization.
- 6.5.2 For incorrect behaviour towards other competitors or the Judges.
- 6.5.3 To move away more than 25 meters from his official buoy.
- 6.5.4 To load or to maintain his spear gun in load position on ground or on the support boat.
- 6.5.5 To have a means of signal indication not in conformity with the Rules.
- 6.5.6 Do not declare to have caught the total number allowed for a certain species of fish, as stated with in the Particular Rules.
- 6.5.7 To fish out of the permitted area.
- 6.5.8 To have obtained help to recover the buoy or the mobile ballast.
- 6.5.9 If the number of fish under the lower of weight, added to the number of fish classified as prohibited species, is equal or higher than the number of valid catches
- .

6.6 - Punishable infraction with exclusion

- 6.6.1 Aggression towards other Competitors, the Judges or the Members of the Organization.
- 6.6.2 To fish species prohibited by the National Legislation defined by the Organizing Country.
- 6.6.3 Replacement of the catches of the regulated species
- 6.6.4 To be in the Competition Zone, before the Official start date and time.
- 6.6.5 To use any type of scuba diving or breathing apparatus.
- 6.6.6 To return after the finish time for the end of the competition.
- 6.6.7 All those who committed offences before the beginning of the competition will not be allowed to take part in the competition.

COMPLAINTS

- Each participating team has the right to place any complaint to the jury.
- Only the captain of the team will present a complaint
- Any complaint will have to be accompanied by a guarantee; the amount is fixed by CMAS
- A complaint must be presented in writing, in French, English or Spanish to the Judge Referee:
 - Before the weighing for those regarding the competition
 - During the weighing for those regarding the weighing and concerning the weighing itself
 - With regard to an error in the classification, the presentation for a complaint must be made with the Judge referee with in 15 minutes following the publication of the classification and accompanied by the payment of the necessary financial guarantee. (This procedure will cause immediate delay in the protocol ceremony for the presentation of the medals).
- The time to prepare and present a complaint. The plaintiff will have a 60 minutes deadline to write and present his report to the International Judge. Failure to meet the deadline the complaint will be regarded as not valid with the loss of the guarantee
- The complaint will be declared inadmissible if these conditions are not met.
- If the complaint is successful the guarantee in cash will be returned. If unsuccessful the guarantee in cash remains with the CMAS.

INTERNATIONAL JUDGE

- For CMAS Championships the International Judge is nominated by the Spear Fishing Commission and ratified by the CMAS A.C. He has full control and authority over all the officials. He must approve their assignments and give them instructions with regard to the Particular Rules relating to the competitions.
- He must make to apply the Rules and the decisions of CMAS and solve all the questions concerning the effective organization that is not referred to in the Specific Competition Rules.
- He authorises the responsibility to give the starting signal after having been ensured that all the members of the College of Judges are in place and ready.
- The Judge Referee as International Jury has the right to cancel or suspend the competition, even without the opinion of the Competition Committee, in the event of unfavourable weather conditions or if the place of competition or the installations do not fulfil the requirements of the Rules.

ANTI DOPING CONTROL

- In the end of 1^o and 2^o day of the competition, anti-doping control will be made to 3 random selected competitors.

RESPONSIBILITIES

- The World Confederation of Underwater Activities (CMAS), and the the Portuguese Federacy of Actividades Subaquáticas (FPAS), as well their Representatives and Collaborators, the Director of the Competition and the Judges, cannot be held responsible for the damage which could be caused with the materials and with the goods



FEDERAÇÃO PORTUGUESA DE
ACTIVIDADES SUBAQUÁTICAS

for the participants, nor for the accidents which could occur with the competitors and other participants, as result of their inscription in the Sports Competition and particularly in the Underwater Competitions

- The official registration of the competitors compels to accept them, always and without reserve the made use one in this regulation, as well as other complementary instructions defined by the Organization, with the authorization of International Judge CMAS.

Note: This particular regulation was approved by the Commission of Fishes Submarine of the CMAS, in xx of May of 2011.

XXVIII World-wide Championship of Fishes Submarine Peniche 2011

PROGRAM

September 15 2011

15H00-19H00 Reception
20H00 Supper

September 16 2011

08H00-09H00 breakfast Hotel (D^a Rita Park)
09H00 Departure for Tourist Stroll
10H00 Meeting of Boat Commissioners
13H00 Lunch
15h00 Technical Meeting (Captains Meeting)
18H00 Opening Ceremony
19H00 Cocktail
20H00 Diner

September 17 2011

07H00-07H30 Breakfast Hotel (D^a Rita Park)
08H00 Embankment Marina of Peniche
09H30 Concentration in the sea Zone of competition
10H00 Beginning of competition
15H00 End of competition
17H00 Weighting
20H00 Diner

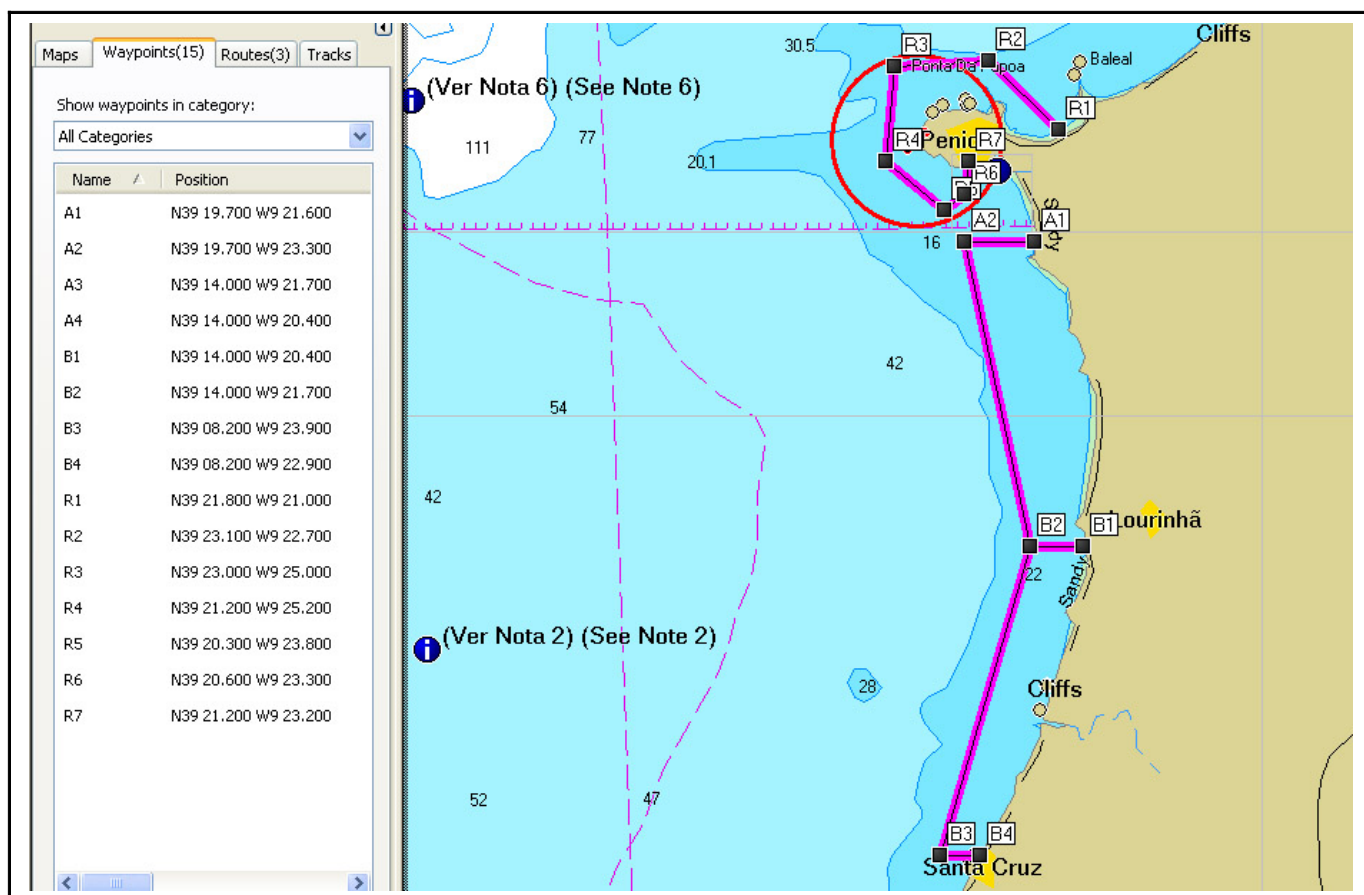
September 18 2011

07H00-07H30 Small-lunch Hotel
08H00 Embankment Marina of Peniche
09H30 Concentration in the sea Zone of competition
10H00 Beginning of test Zone of competition
15H00 End of test Zone of competition
16H00 Weighting
19H00-19H30 CMAS Delivering Prize Ceremony
21H00 Diner and closing

XXVIII Campeonato Euro-Africano de Pesca Submarina Peniche 2011

Carta das Zonas de Competição

[Zona A (A1 a A4); Zona B (B1 a B4); Zona de Reserva (R1 a R7)]



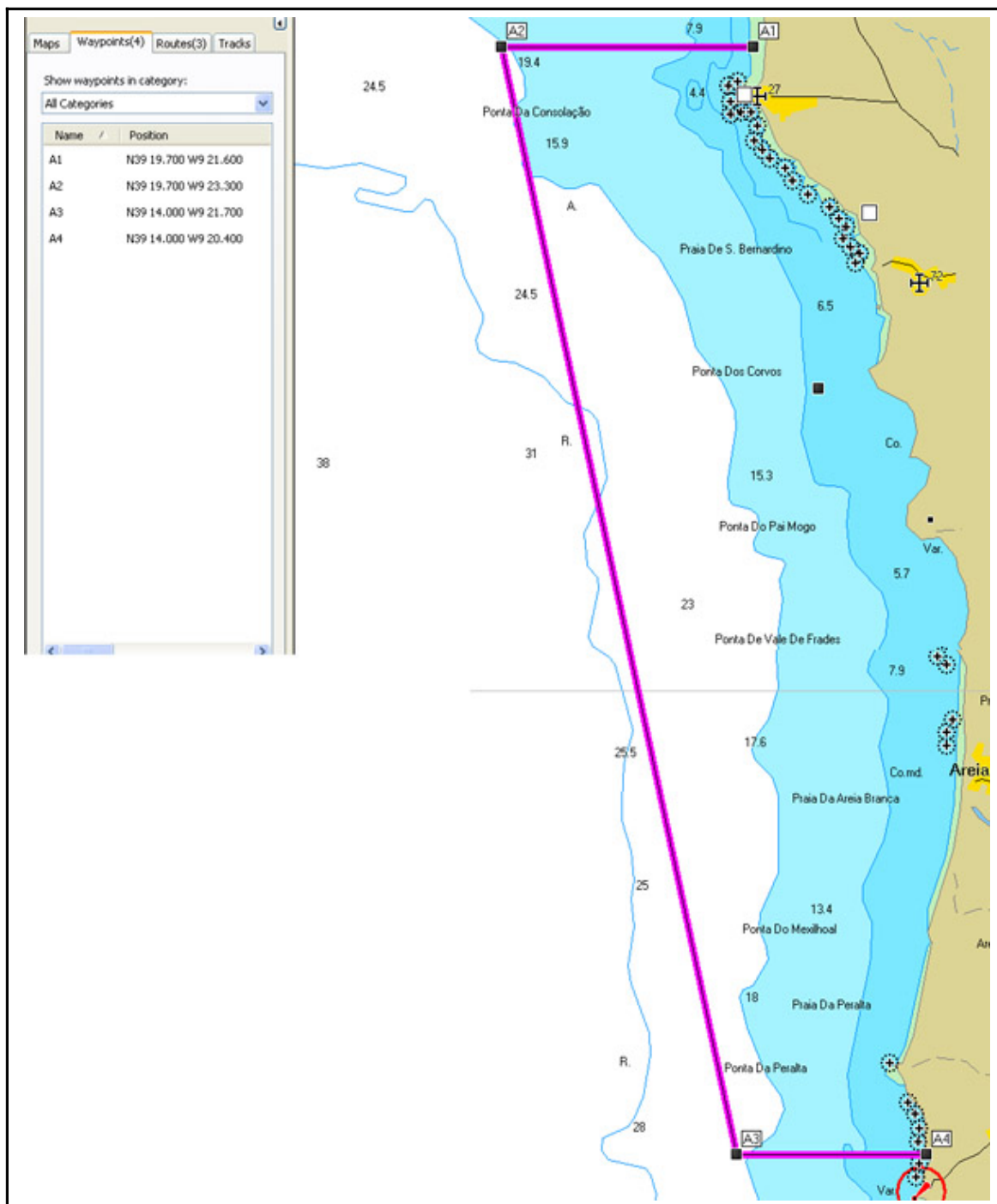


CONFEDERACION MONDIAL DES
ACTIVITES SUBAQUATIQUES



FEDERAÇÃO PORTUGUESA DE
ACTIVIDADES SUBAQUÁTICAS

ZONA A



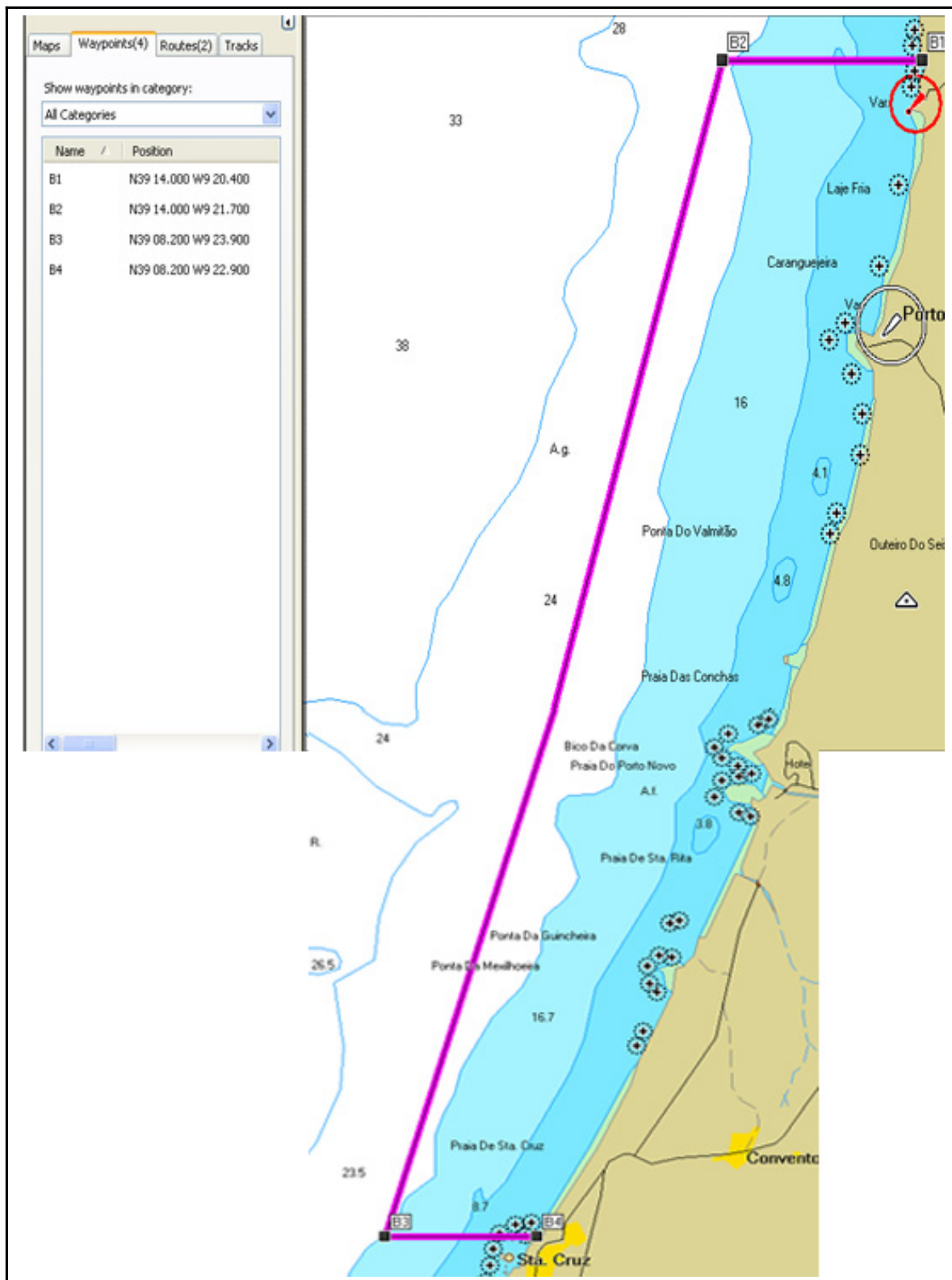
ZONA B



CONFEDERACION MONDIAL DES
ACTIVITES SUBAQUATIQUES



FEDERAÇÃO PORTUGUESA DE
ACTIVIDADES SUBAQUÁTICAS



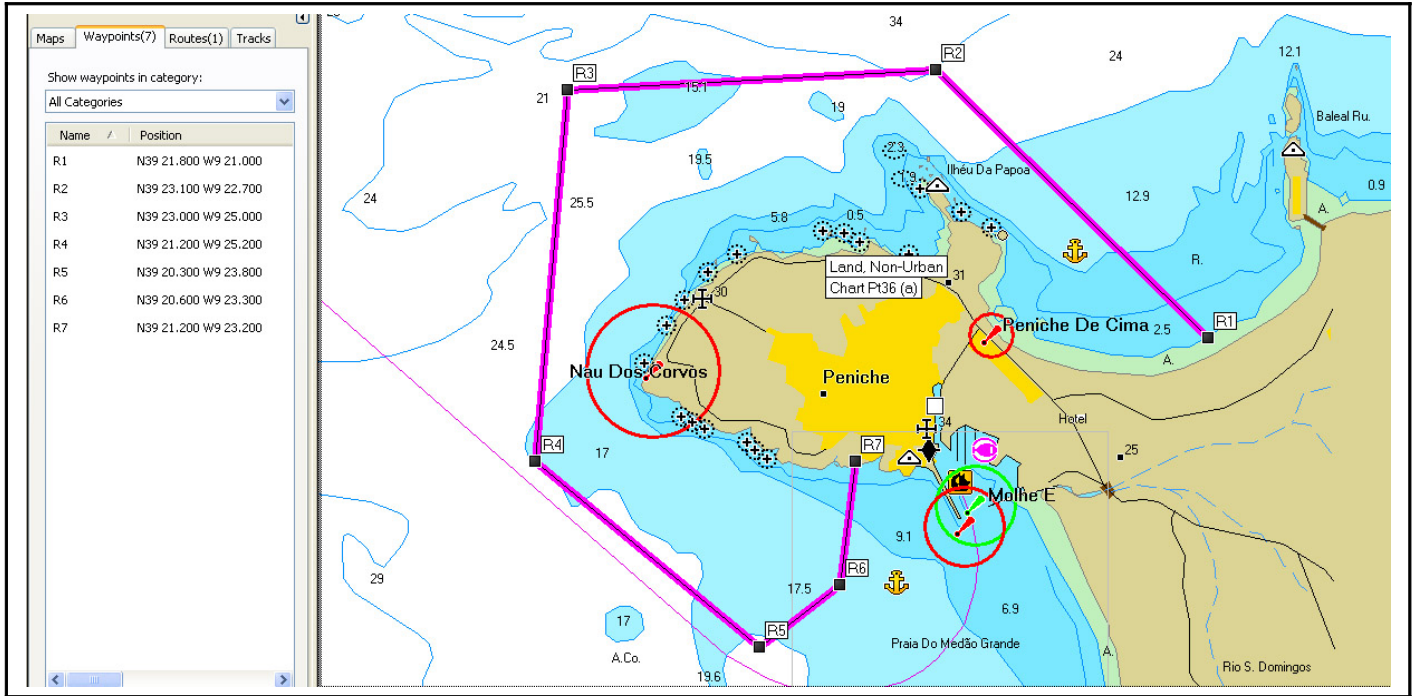
Zona R



CONFEDERACION MUNDIAL DES
ACTIVITES SUBAQUATIQUES



FEDERAÇÃO PORTUGUESA DE
ACTIVIDADES SUBAQUÁTICAS



Entire zone of competition



CONFEDERACION MONDIAL DES
ACTIVITES SUBAQUATIQUES



FEDERAÇÃO PORTUGUESA DE
ACTIVIDADES SUBAQUÁTICAS

